

DESIGN :	---
DRAWN :	---
CHECKED :	---
DATE :	12-21-2008

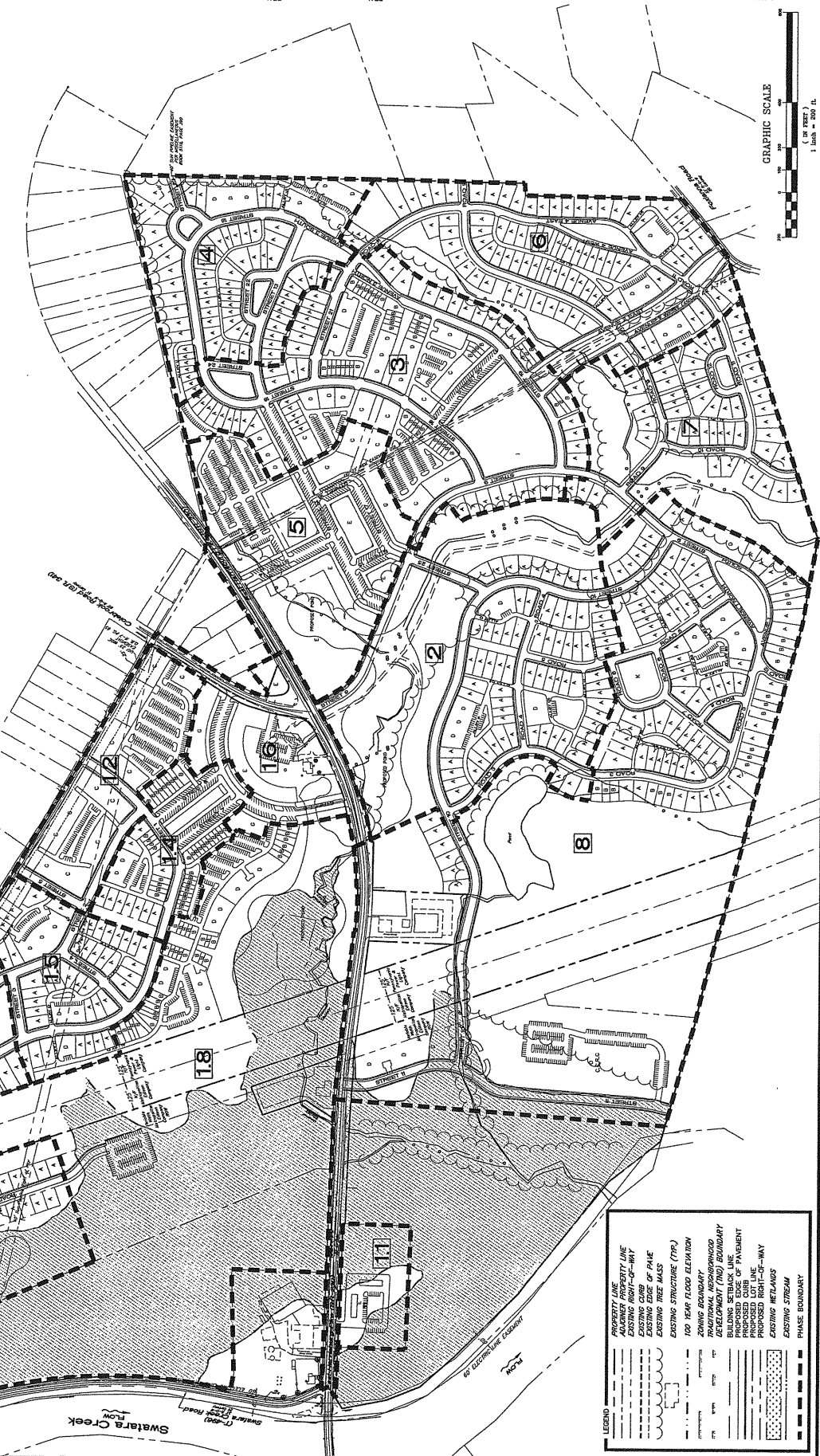
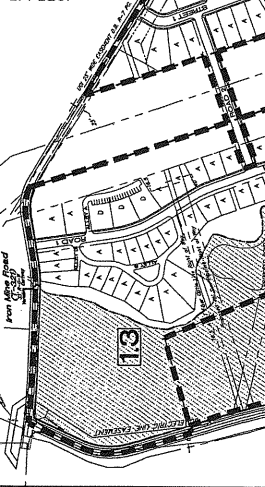
ALPHA
 PLANNING & ENGINEERING & SURVEYING
 115 LIVE OAK RD. P.O. BOX
 NEW CUMBERLAND, PA 17070
 PHONE (717) 770-4500
 FAX (717) 770-4500
 WWW.ALPHACON.COM

TRADITIONAL NEIGHBORHOOD DEVELOPMENT MASTER PLAN
 PHASE PLAN
 LITTLE FARM
 A PLANNED COMMUNITY
 LONGMEYER TOWNSHIP, DAUPHIN COUNTY, PENNSYLVANIA

PROJECT NO. 280042
 DRAWING BOOK :
 SCALE : 1" = 200'
 SHEET 22 OF 27

PHASE	START	ANTICIPATED PHASING SCHEDULE	S.F. FRT.	S.F. INT.	MT	COND.	MIKU	CCRC	TOTAL	CUAM TOT	DENSITY	OS	ACRE
1	2010	UTILITIES	0	0	0	0	0	0	0	0	0	0	0
2	2010	UTILITIES	0	0	0	0	0	0	0	0	0	0	0
3	2010	UTILITIES	0	0	0	0	0	0	0	0	0	0	0
4	2010	UTILITIES	0	0	0	0	0	0	0	0	0	0	0
5	2010	UTILITIES	0	0	0	0	0	0	0	0	0	0	0
6	2010	UTILITIES	0	0	0	0	0	0	0	0	0	0	0
7	2010	UTILITIES	0	0	0	0	0	0	0	0	0	0	0
8	2010	UTILITIES	0	0	0	0	0	0	0	0	0	0	0
9	2010	UTILITIES	0	0	0	0	0	0	0	0	0	0	0
10	2010	UTILITIES	0	0	0	0	0	0	0	0	0	0	0
11	2010	UTILITIES	0	0	0	0	0	0	0	0	0	0	0
12	2010	UTILITIES	0	0	0	0	0	0	0	0	0	0	0
13	2010	UTILITIES	0	0	0	0	0	0	0	0	0	0	0
14	2010	UTILITIES	0	0	0	0	0	0	0	0	0	0	0
15	2010	UTILITIES	0	0	0	0	0	0	0	0	0	0	0
16	2010	UTILITIES	0	0	0	0	0	0	0	0	0	0	0
17	2010	UTILITIES	0	0	0	0	0	0	0	0	0	0	0
18	2010	UTILITIES	0	0	0	0	0	0	0	0	0	0	0
19	2010	UTILITIES	0	0	0	0	0	0	0	0	0	0	0
20	2010	UTILITIES	0	0	0	0	0	0	0	0	0	0	0
21	2010	UTILITIES	0	0	0	0	0	0	0	0	0	0	0
22	2010	UTILITIES	0	0	0	0	0	0	0	0	0	0	0
23	2010	UTILITIES	0	0	0	0	0	0	0	0	0	0	0
24	2010	UTILITIES	0	0	0	0	0	0	0	0	0	0	0
25	2010	UTILITIES	0	0	0	0	0	0	0	0	0	0	0
26	2010	UTILITIES	0	0	0	0	0	0	0	0	0	0	0
27	2010	UTILITIES	0	0	0	0	0	0	0	0	0	0	0
28	2010	UTILITIES	0	0	0	0	0	0	0	0	0	0	0
29	2010	UTILITIES	0	0	0	0	0	0	0	0	0	0	0
30	2010	UTILITIES	0	0	0	0	0	0	0	0	0	0	0
31	2010	UTILITIES	0	0	0	0	0	0	0	0	0	0	0
32	2010	UTILITIES	0	0	0	0	0	0	0	0	0	0	0
33	2010	UTILITIES	0	0	0	0	0	0	0	0	0	0	0
34	2010	UTILITIES	0	0	0	0	0	0	0	0	0	0	0
35	2010	UTILITIES	0	0	0	0	0	0	0	0	0	0	0
36	2010	UTILITIES	0	0	0	0	0	0	0	0	0	0	0
37	2010	UTILITIES	0	0	0	0	0	0	0	0	0	0	0
38	2010	UTILITIES	0	0	0	0	0	0	0	0	0	0	0
39	2010	UTILITIES	0	0	0	0	0	0	0	0	0	0	0
40	2010	UTILITIES	0	0	0	0	0	0	0	0	0	0	0
41	2010	UTILITIES	0	0	0	0	0	0	0	0	0	0	0
42	2010	UTILITIES	0	0	0	0	0	0	0	0	0	0	0
43	2010	UTILITIES	0	0	0	0	0	0	0	0	0	0	0
44	2010	UTILITIES	0	0	0	0	0	0	0	0	0	0	0
45	2010	UTILITIES	0	0	0	0	0	0	0	0	0	0	0
46	2010	UTILITIES	0	0	0	0	0	0	0	0	0	0	0
47	2010	UTILITIES	0	0	0	0	0	0	0	0	0	0	0
48	2010	UTILITIES	0	0	0	0	0	0	0	0	0	0	0
49	2010	UTILITIES	0	0	0	0	0	0	0	0	0	0	0
50	2010	UTILITIES	0	0	0	0	0	0	0	0	0	0	0
51	2010	UTILITIES	0	0	0	0	0	0	0	0	0	0	0
52	2010	UTILITIES	0	0	0	0	0	0	0	0	0	0	0
53	2010	UTILITIES	0	0	0	0	0	0	0	0	0	0	0
54	2010	UTILITIES	0	0	0	0	0	0	0	0	0	0	0
55	2010	UTILITIES	0	0	0	0	0	0	0	0	0	0	0
56	2010	UTILITIES	0	0	0	0	0	0	0	0	0	0	0
57	2010	UTILITIES	0	0	0	0	0	0	0	0	0	0	0
58	2010	UTILITIES	0	0	0	0	0	0	0	0	0	0	0
59	2010	UTILITIES	0	0	0	0	0	0	0	0	0	0	0
60	2010	UTILITIES	0	0	0	0	0	0	0	0	0	0	0
61	2010	UTILITIES	0	0	0	0	0	0	0	0	0	0	0
62	2010	UTILITIES	0	0	0	0	0	0	0	0	0	0	0
63	2010	UTILITIES	0	0	0	0	0	0	0	0	0	0	0
64	2010	UTILITIES	0	0	0	0	0	0	0	0	0	0	0
65	2010	UTILITIES	0	0	0	0	0	0	0	0	0	0	0
66	2010	UTILITIES	0	0	0	0	0	0	0	0	0	0	0
67	2010	UTILITIES	0	0	0	0	0	0	0	0	0	0	0
68	2010	UTILITIES	0	0	0	0	0	0	0	0	0	0	0
69	2010	UTILITIES	0	0	0	0	0	0	0	0	0	0	0
70	2010	UTILITIES	0	0	0	0	0	0	0	0	0	0	0
71	2010	UTILITIES	0	0	0	0	0	0	0	0	0	0	0
72	2010	UTILITIES	0	0	0	0	0	0	0	0	0	0	0
73	2010	UTILITIES	0	0	0	0	0	0	0	0	0	0	0
74	2010	UTILITIES	0	0	0	0	0	0	0	0	0	0	0
75	2010	UTILITIES	0	0	0	0	0	0	0	0	0	0	0
76	2010	UTILITIES	0	0	0	0	0	0	0	0	0	0	0
77	2010	UTILITIES	0	0	0	0	0	0	0	0	0	0	0
78	2010	UTILITIES	0	0	0	0	0	0	0	0	0	0	0
79	2010	UTILITIES	0	0	0	0	0	0	0	0	0	0	0
80	2010	UTILITIES	0	0	0	0	0	0	0	0	0	0	0
81	2010	UTILITIES	0	0	0	0	0	0	0	0	0	0	0
82	2010	UTILITIES	0	0	0	0	0	0	0	0	0	0	0
83	2010	UTILITIES	0	0	0	0	0	0	0	0	0	0	0
84	2010	UTILITIES	0	0	0	0	0	0	0	0	0	0	0
85	2010	UTILITIES	0	0	0	0	0	0	0	0	0	0	0
86	2010	UTILITIES	0	0	0	0	0	0	0	0	0	0	0
87	2010	UTILITIES	0	0	0	0	0	0	0	0	0	0	0
88	2010	UTILITIES	0	0	0	0	0	0	0	0	0	0	0
89	2010	UTILITIES	0	0	0	0	0	0	0	0	0	0	0
90	2010	UTILITIES	0	0	0	0	0	0	0	0	0	0	0
91	2010	UTILITIES	0	0	0	0	0	0	0	0	0	0	0
92	2010	UTILITIES	0	0	0	0	0	0	0	0	0	0	0
93	2010	UTILITIES	0	0	0	0	0	0	0	0	0	0	0
94	2010	UTILITIES	0	0	0	0	0	0	0	0	0	0	0
95	2010	UTILITIES	0	0	0	0	0	0	0	0	0	0	0
96	2010	UTILITIES	0	0	0	0	0	0	0	0	0	0	0
97	2010	UTILITIES	0	0	0	0	0	0	0	0	0	0	0
98	2010	UTILITIES	0	0	0	0	0	0	0	0	0	0	0
99	2010	UTILITIES	0	0	0	0	0	0	0	0	0	0	0
100	2010	UTILITIES	0	0	0	0	0	0	0	0	0	0	0
TOTAL			115	71	385	150	150	0	627		5.7	35.87	

IT IS INTENDED TO DEVELOP THE NORTHWEST AS PHASE 1, THROUGH 1 & 8. PHASES 2-8 MAY BE FURTHER BROKEN DOWN INTO PHASES FOR THESE PHASES. THE PHASING FOR ORDER OF PHASING AND LIMITS OF PHASING IS SUBJECT TO CHANGE.



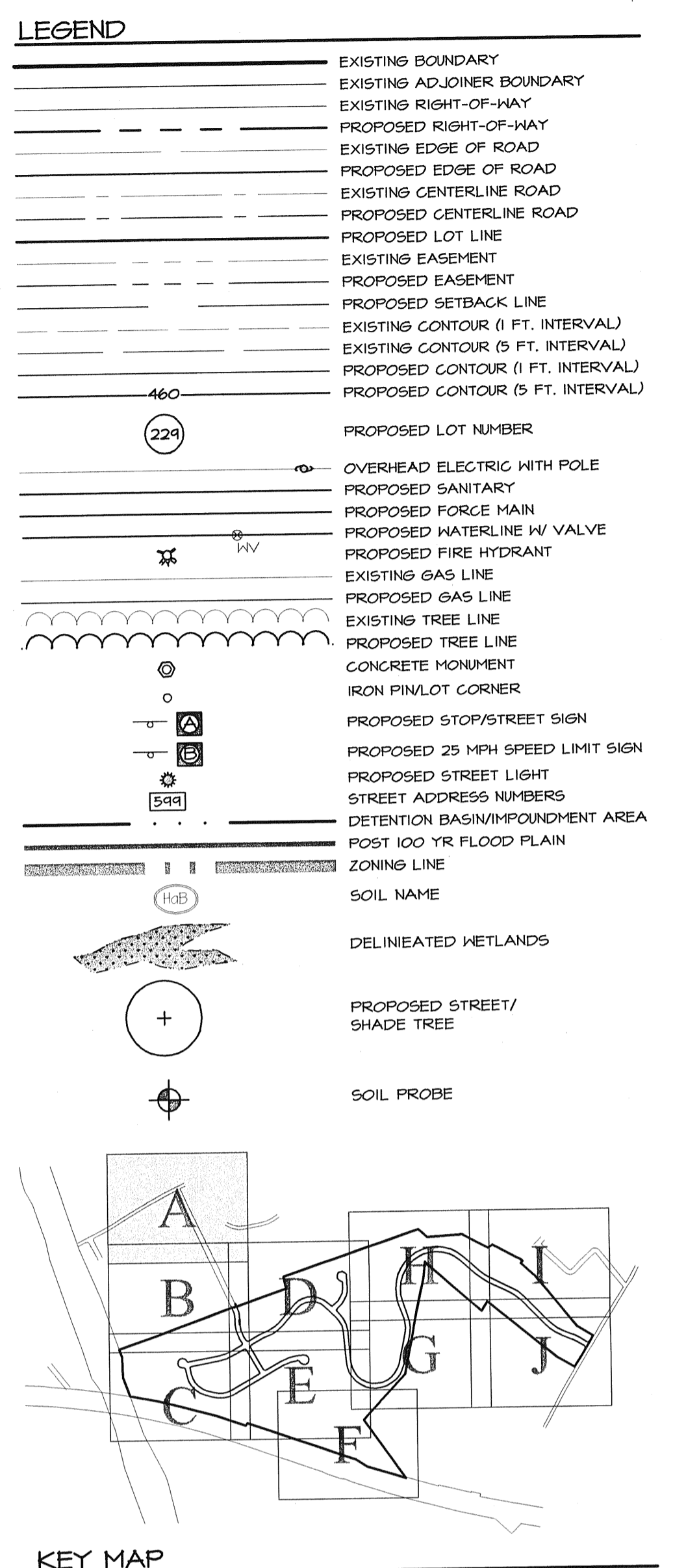
LEGEND	DESCRIPTION
[Symbol]	PROPERTY LINE
[Symbol]	ADJACENT PROPERTY LINE
[Symbol]	EXISTING RIGHT-OF-WAY
[Symbol]	EXISTING CURB
[Symbol]	EXISTING EDGE OF PAVE
[Symbol]	EXISTING TREE MASS
[Symbol]	EXISTING STRUCTURE (TOP)
[Symbol]	100 YEAR FLOOD ELEVATION
[Symbol]	ZONING BOUNDARY
[Symbol]	ADJACENT ZONING BOUNDARY
[Symbol]	ADJACENT ZONING BOUNDARY
[Symbol]	BUILDING SETBACK LINE
[Symbol]	PROPOSED EDGE OF PAVEMENT</

DRAWING: F:\data\DKG\470\470002\Longleaf\LD-preliminary\UTILITY PLAN.dwg - PLOTTED: Jan 02, 2007 10:37:01 am

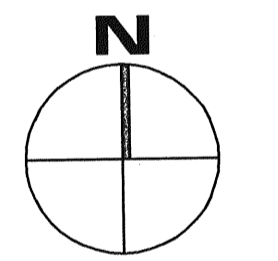


MATCHLINE
SEE SHEET B

MATCHLINE
SEE SHEET D



**NO IMPROVEMENTS
PROPOSED FOR THIS
SHEET**



EA
group, inc.
ENGINEERS & LANDSCAPE ARCHITECTS
143 SOUTH BROAD STREET
LITITZ, PA 17543
(717) 626-1211 FAX (717) 626-1040
www.eagroup.com

PRELIMINARY SUBDIVISION PLAN

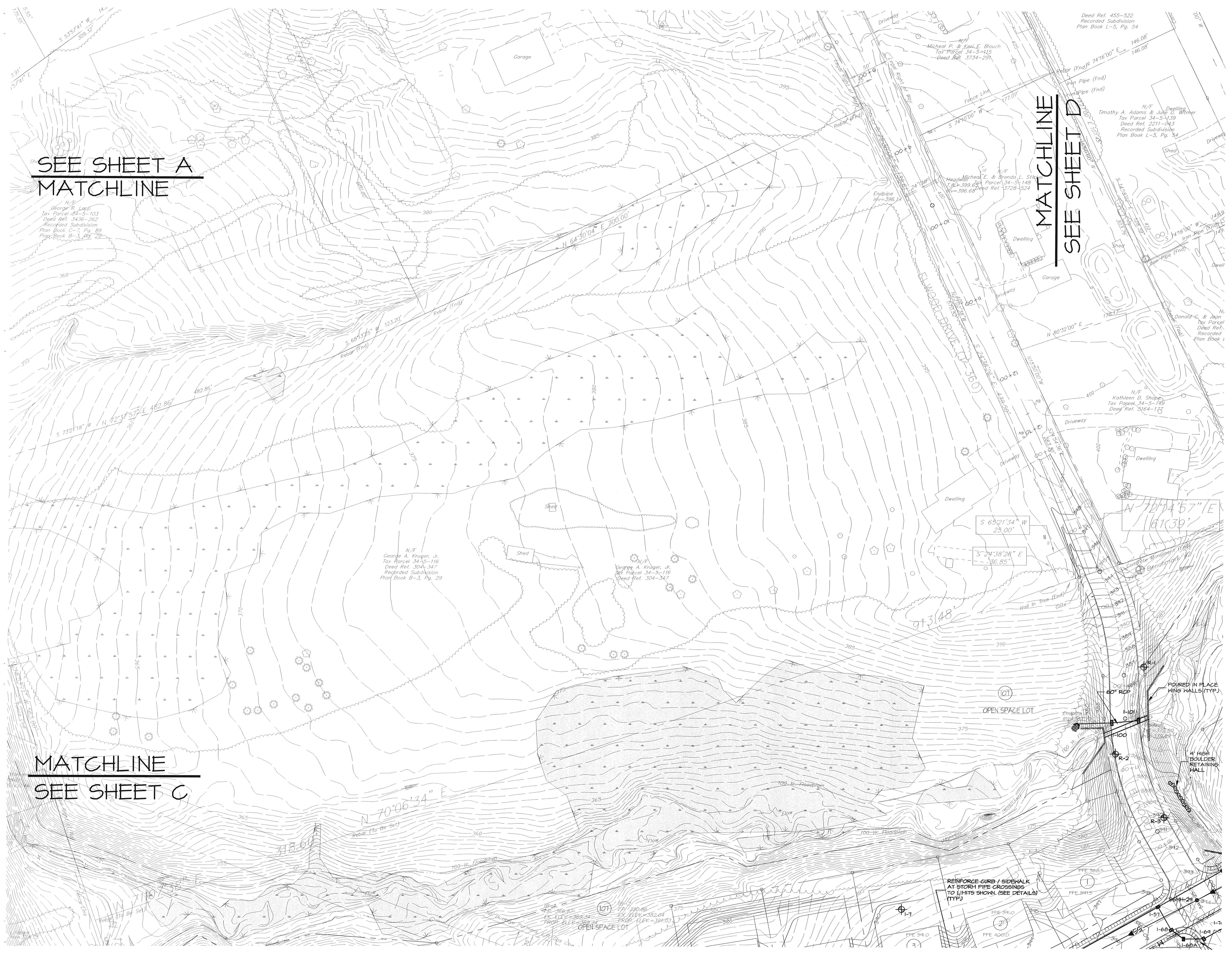
SUBJECT:
UTILITY PLAN A
FOR
LAUFFER HILL
LONDONDERRY TOWNSHIP, DAUPHIN COUNTY, PENNSYLVANIA

CLIENT:
LONGLEAF DEVELOPMENT COMPANY, L.L.C.
c/o MR. GREG BARDELL
1821 OREGON PIKE, SUITE 6
LANCASTER, PA 17601
(717) 591-1644

MANAGER:	BDG	DATE:	JULY 21, 2006
DESIGN:	BDG	PROJECT NO.:	470-002
DRAWN BY:	BLM	DRAWING NO.:	27 OF 72
SCALE:	AS SHOWN		

REVISIONS:	DATE:	BY:
1. PER TOWNSHIP REVIEW	10/9/06	BLM
2. PER TOWNSHIP REVIEW	11/8/06	BLM
3. PER TOWNSHIP REVIEW	12/11/06	BLM
4. PER TOWNSHIP REVIEW	1/2/07	BLM

DRAWING: F:\Data\DWG\470470002\LongleafLD-preliminary\UTILITY PLAN.dwg - PLOTTED: Jan 02, 2007 10:37 am



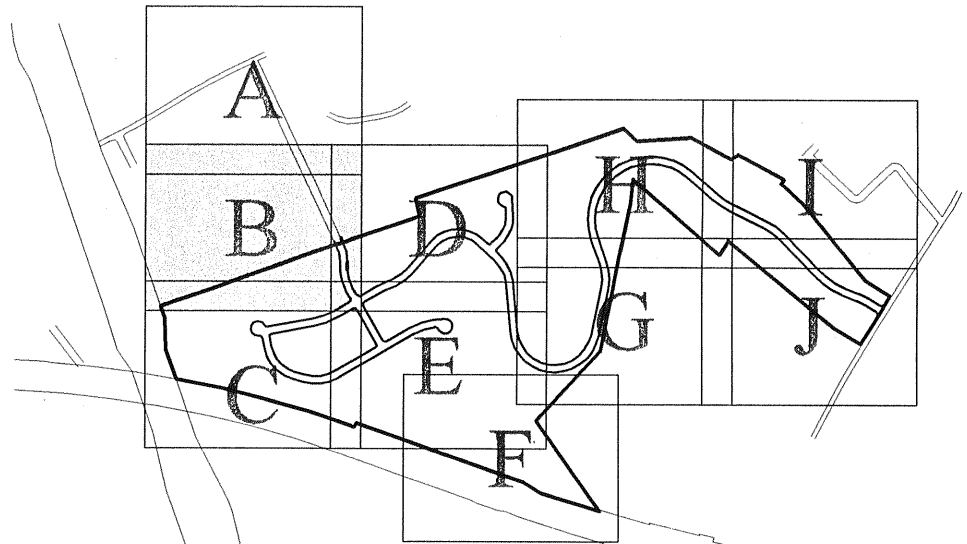
SEE SHEET A
MATCHLINE

MATCHLINE
SEE SHEET D

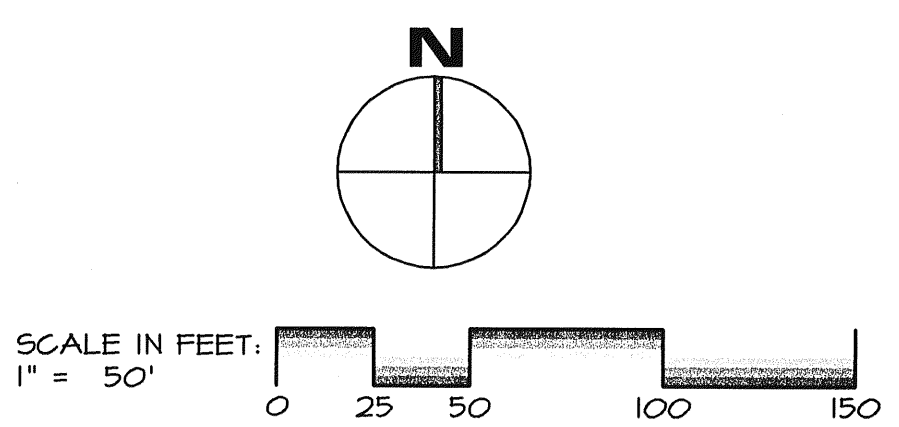
MATCHLINE
SEE SHEET C

LEGEND

	EXISTING BOUNDARY
	EXISTING ADJOINER BOUNDARY
	EXISTING RIGHT-OF-WAY
	PROPOSED RIGHT-OF-WAY
	EXISTING EDGE OF ROAD
	PROPOSED EDGE OF ROAD
	EXISTING CENTERLINE ROAD
	PROPOSED CENTERLINE ROAD
	PROPOSED LOT LINE
	EXISTING EASEMENT
	PROPOSED EASEMENT
	PROPOSED SETBACK LINE
	EXISTING CONTOUR (1 FT. INTERVAL)
	EXISTING CONTOUR (5 FT. INTERVAL)
	EXISTING CONTOUR (10 FT. INTERVAL)
	PROPOSED CONTOUR (1 FT. INTERVAL)
	PROPOSED CONTOUR (5 FT. INTERVAL)
	PROPOSED LOT NUMBER
	OVERHEAD ELECTRIC WITH POLE
	PROPOSED SANITARY
	PROPOSED FORCE MAIN
	PROPOSED WATERLINE W/ VALVE
	PROPOSED FIRE HYDRANT
	EXISTING GAS LINE
	PROPOSED GAS LINE
	EXISTING TREE LINE
	PROPOSED TREE LINE
	CONCRETE MONUMENT
	IRON PIN/LOT CORNER
	PROPOSED STOP/STREET SIGN
	PROPOSED 25 MPH SPEED LIMIT SIGN
	PROPOSED STREET LIGHT
	STREET ADDRESS NUMBERS
	DETENTION BASIN/PONDMENT AREA
	ZONING LINE
	SOIL NAME
	DELINEATED WETLANDS
	PROPOSED STREET/ SHADE TREE
	SOIL PROBE



KEY MAP
SCALE: 1" = 100'

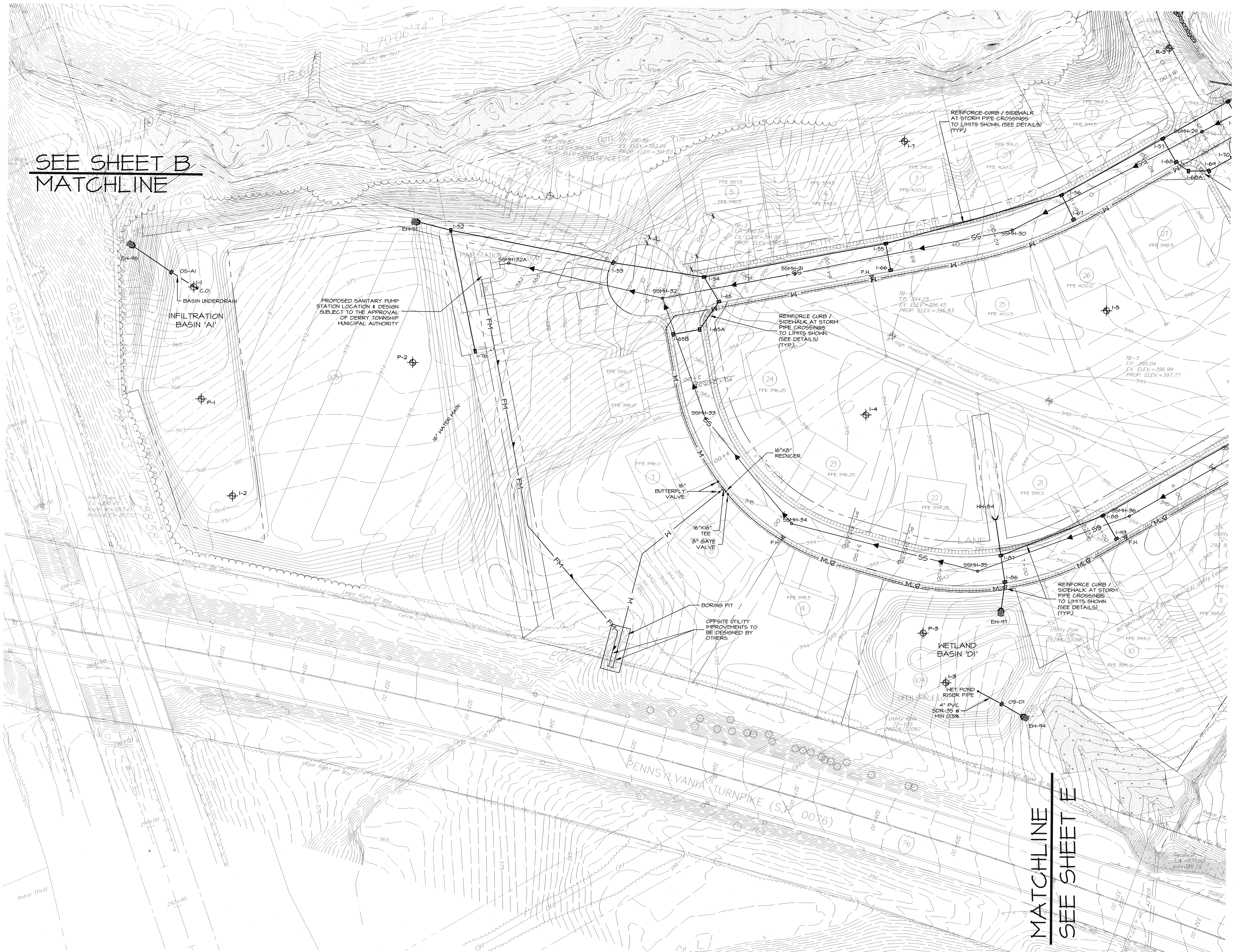


EA
group, inc.
ENGINEERS & LANDSCAPE ARCHITECTS
143 SOUTH BROAD STREET
LITITZ, PA 17543
(717) 626-1271 FAX (717) 626-1040
www.eagroup.com

PRELIMINARY SUBDIVISION PLAN
SUBJECT:
UTILITY PLAN B
FOR
LAUFFER HILL
LONDONDERRY TOWNSHIP, DAUPHIN COUNTY, PENNSYLVANIA
CLIENT:
LONGLEAF DEVELOPMENT COMPANY, L.L.C.
c/o MR. GREG BARDELL
1821 OREGON PIKE, SUITE 6
LANCASTER, PA 17601
(717) 581-1644

MANAGER:	BDG	DATE:	JULY 21, 2006
DESIGN:	BDG	PROJECT NO.:	470-002
DRAWN BY:	BLM	DRAWING NO.:	28 OF 12
SCALE:	AS SHOWN	REVISIONS:	
		DATE:	BY:
1. PER TOWNSHIP REVIEW		10/19/06	BLM
2. PER TOWNSHIP REVIEW		11/8/06	BLM
3. PER TOWNSHIP REVIEW		12/11/06	BLM
4. PER TOWNSHIP REVIEW		1/2/07	BLM

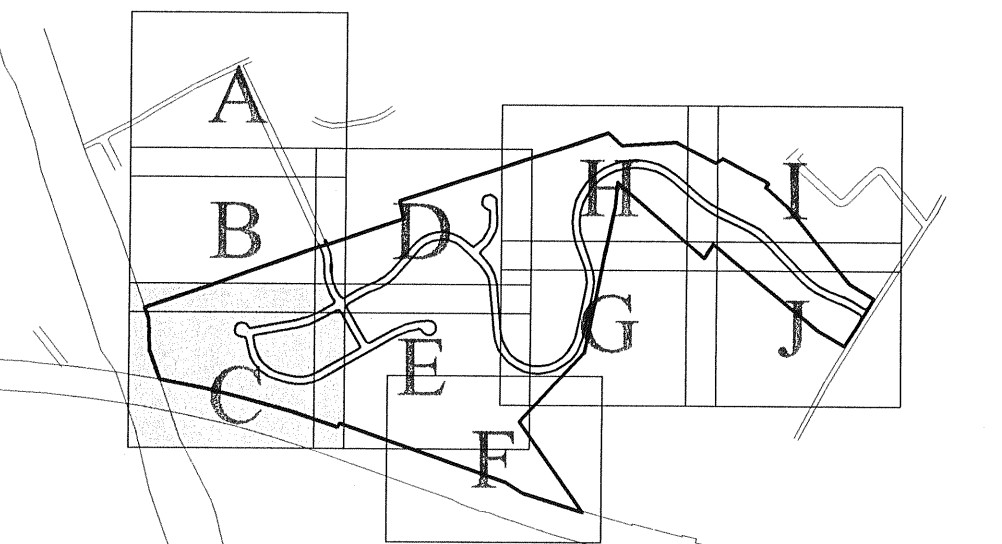
DRAWING: F:\Data\DWG\470\470002\Longleaf\LD-preliminary\UTILITY PLAN.dwg - PLOTTED: Jan 02, 2007 10:39 am



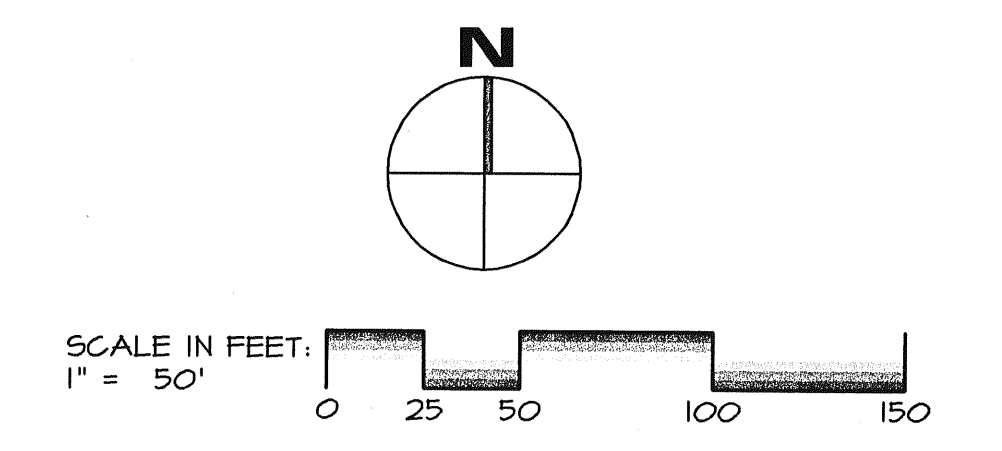
SEE SHEET B
MATCHLINE

MATCHLINE
SEE SHEET E

- LEGEND**
- EXISTING BOUNDARY
 - EXISTING ADJONER BOUNDARY
 - EXISTING RIGHT-OF-WAY
 - PROPOSED RIGHT-OF-WAY
 - EXISTING EDGE OF ROAD
 - PROPOSED EDGE OF ROAD
 - EXISTING CENTERLINE ROAD
 - PROPOSED CENTERLINE ROAD
 - PROPOSED LOT LINE
 - EXISTING EASEMENT
 - PROPOSED EASEMENT
 - PROPOSED SETBACK LINE
 - EXISTING CONTOUR (5 FT. INTERVAL)
 - EXISTING CONTOUR (5 FT. INTERVAL)
 - PROPOSED CONTOUR (5 FT. INTERVAL)
 - PROPOSED CONTOUR (5 FT. INTERVAL)
 - PROPOSED LOT NUMBER
 - OVERHEAD ELECTRIC WITH POLE
 - PROPOSED SANITARY
 - PROPOSED FORCE MAIN
 - PROPOSED WATERLINE W VALVE
 - PROPOSED FIRE HYDRANT
 - EXISTING GAS LINE
 - PROPOSED GAS LINE
 - EXISTING TREE LINE
 - PROPOSED TREE LINE
 - CONCRETE MONUMENT
 - IRON PIN/LOT CORNER
 - PROPOSED STOP/STREET SIGN
 - PROPOSED 25 MPH SPEED LIMIT SIGN
 - PROPOSED STREET LIGHT
 - STREET ADDRESS NUMBERS
 - DETENTION BASIN/FOUNDATION AREA
 - POST 100 YR FLOOD PLAIN
 - ZONING LINE
 - SOIL NAME
 - DELINEATED WETLANDS
 - PROPOSED STREET/ SHADE TREE
 - SOIL PROBE



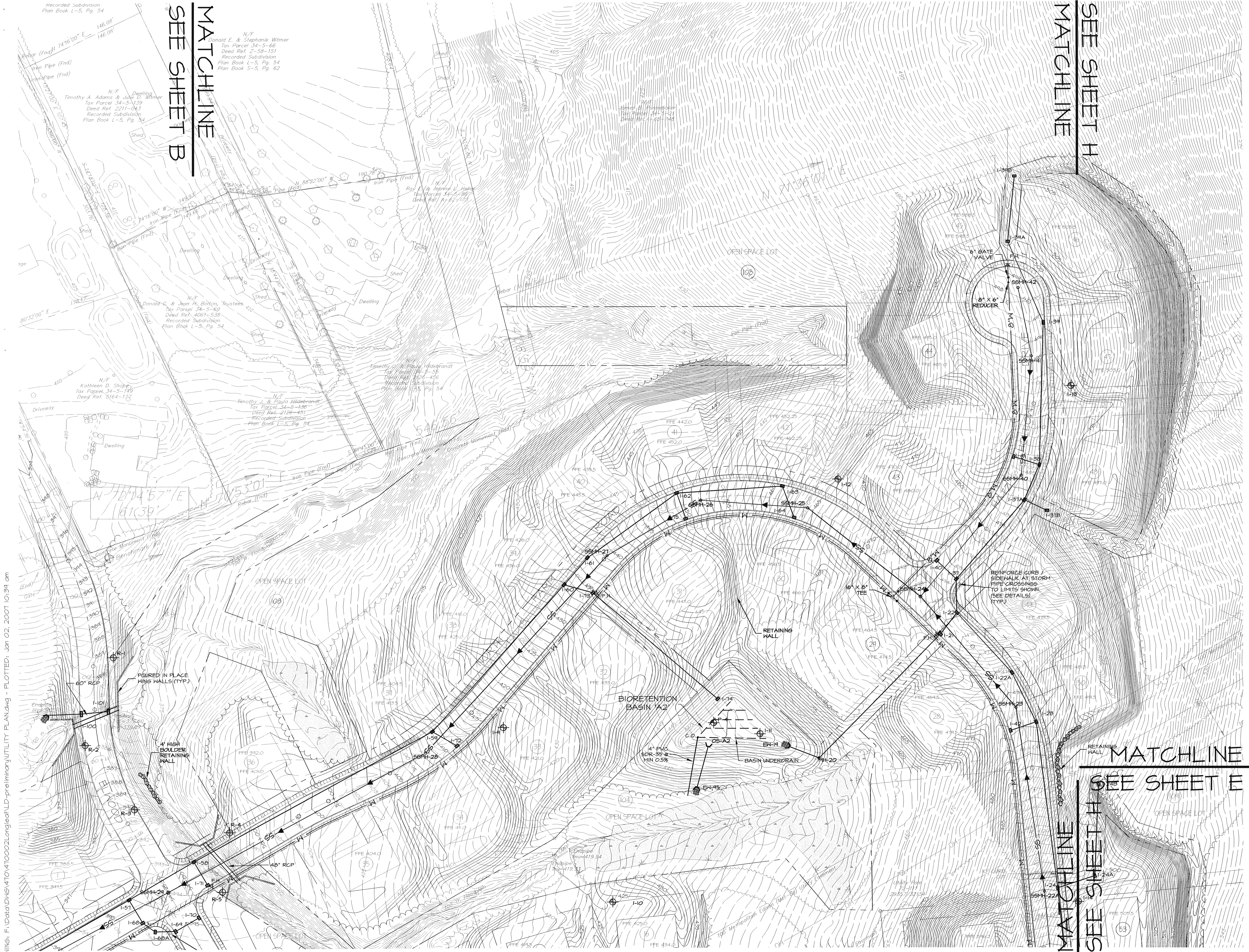
KEY MAP
SCALE: 1" = 140'



EA
group, inc.
ENGINEERS & LANDSCAPE ARCHITECTS
143 SOUTH BROAD STREET
LITIZ, PA 17543
(717) 626-1211 FAX (717) 626-1040
www.ea1929.com

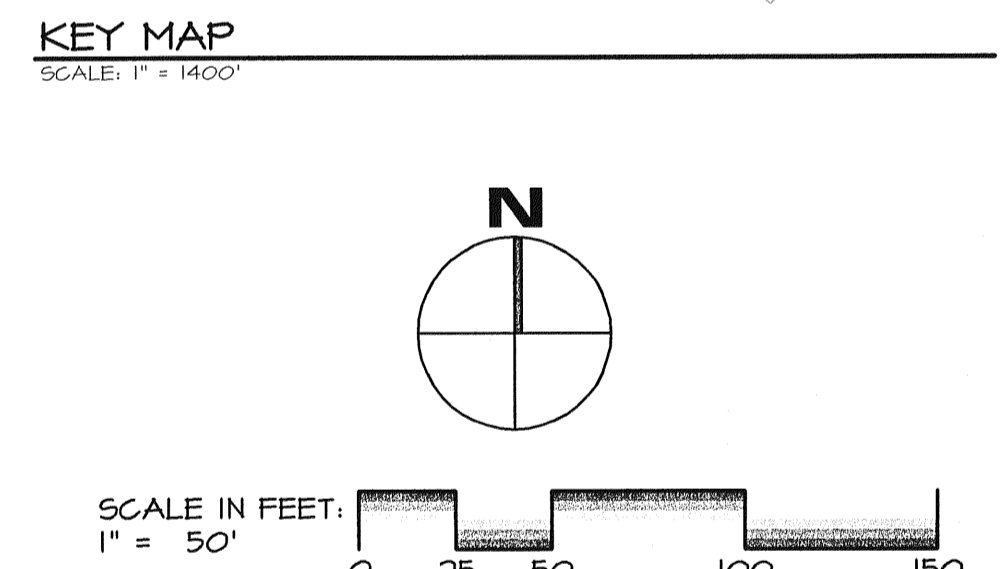
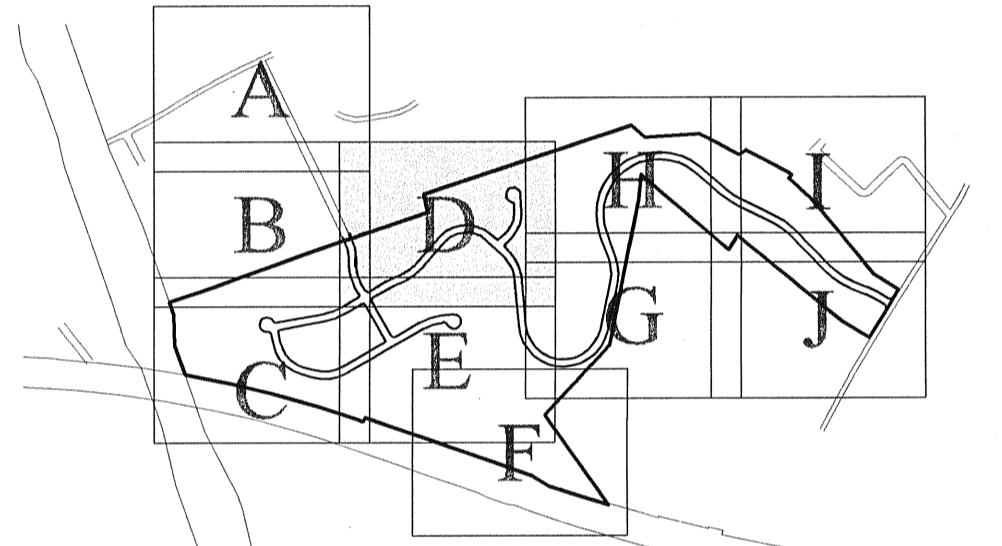
PRELIMINARY SUBDIVISION PLAN
SUBJECT:
UTILITY PLAN C
FOR
LAUFFER HILL
LONDONDERRY TOWNSHIP, DAUPHIN COUNTY, PENNSYLVANIA
CLIENT:
LONGLEAF DEVELOPMENT COMPANY, L.L.C.
c/o MR. GREG BARDELL
1821 OREGON PIKE, SUITE 6
LANCASTER, PA 17601
(717) 581-1644

MANAGER:	BDG	DATE:	JULY 21, 2006
DESIGN:	BDG	PROJECT NO.:	470-002
DRAWN BY:	BLM	DRAWING NO.:	29 OF 12
SCALE:	AS SHOWN		
REVISIONS:		DATE:	BY:
1. PER TOWNSHIP REVIEW		10/4/06	BLM
2. PER TOWNSHIP REVIEW		11/8/06	BLM
3. PER TOWNSHIP REVIEW		12/11/06	BLM
4. PER TOWNSHIP REVIEW		1/2/07	BLM



LEGEND

	EXISTING BOUNDARY
	EXISTING ADJOINER BOUNDARY
	EXISTING RIGHT-OF-WAY
	PROPOSED RIGHT-OF-WAY
	EXISTING EDGE OF ROAD
	PROPOSED EDGE OF ROAD
	EXISTING CENTERLINE ROAD
	PROPOSED CENTERLINE ROAD
	PROPOSED LOT LINE
	EXISTING EASEMENT
	PROPOSED EASEMENT
	PROPOSED SETBACK LINE
	EXISTING CONTOUR (5 FT. INTERVAL)
	EXISTING CONTOUR (1 FT. INTERVAL)
	PROPOSED CONTOUR (5 FT. INTERVAL)
	PROPOSED CONTOUR (1 FT. INTERVAL)
	PROPOSED LOT NUMBER
	OVERHEAD ELECTRIC WITH POLE
	PROPOSED SANITARY
	PROPOSED FORCE MAIN
	PROPOSED WATERLINE W/ VALVE
	PROPOSED FIRE HYDRANT
	EXISTING GAS LINE
	PROPOSED GAS LINE
	EXISTING TREE LINE
	PROPOSED TREE LINE
	CONCRETE MONUMENT
	IRON PIN/LOT CORNER
	PROPOSED STOP/STREET SIGN
	PROPOSED 25 MPH SPEED LIMIT SIGN
	PROPOSED STREET LIGHT
	STREET ADDRESS NUMBERS
	DETENTION BASIN/PONDMENT AREA
	POST 100 YR FLOOD PLAIN
	ZONING LINE
	SOIL NAME
	DELINEATED WETLANDS
	PROPOSED STREET/SHADE TREE
	SOIL PROBE



EA group, inc.
ENGINEERS & LANDSCAPE ARCHITECTS
143 SOUTH BROAD STREET
LITITZ, PA 17543
(717) 626-1271 FAX (717) 626-1040
www.eagroup.com

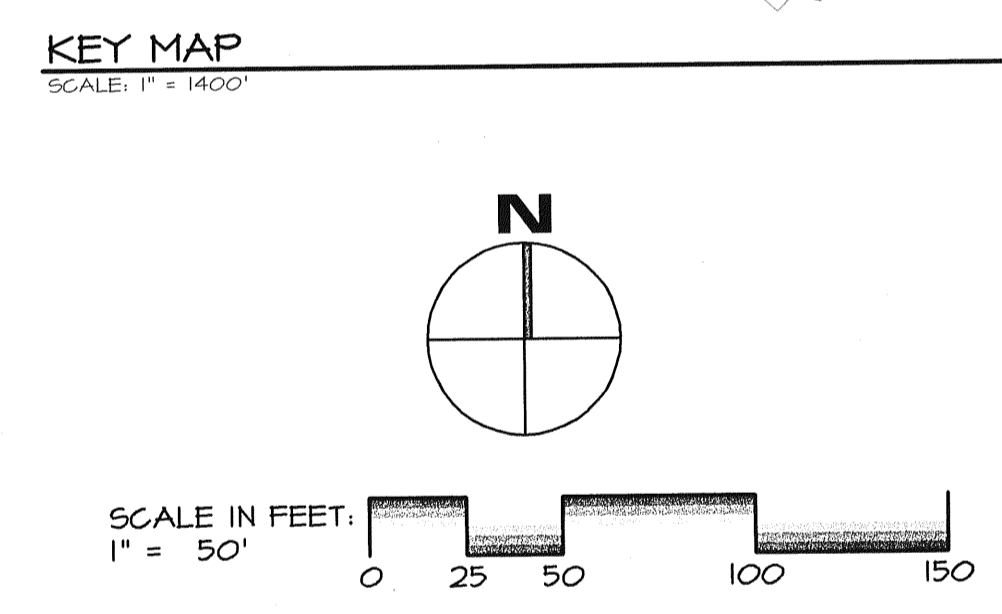
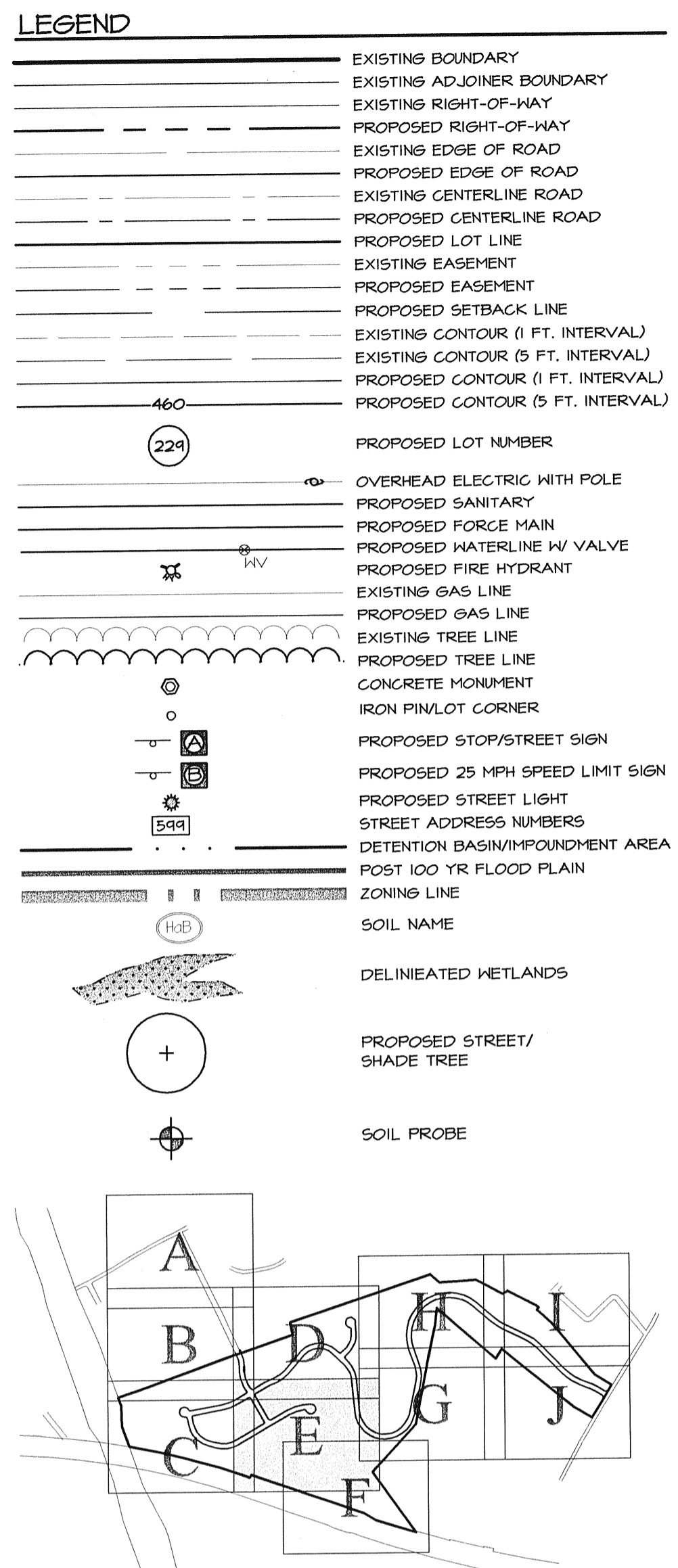
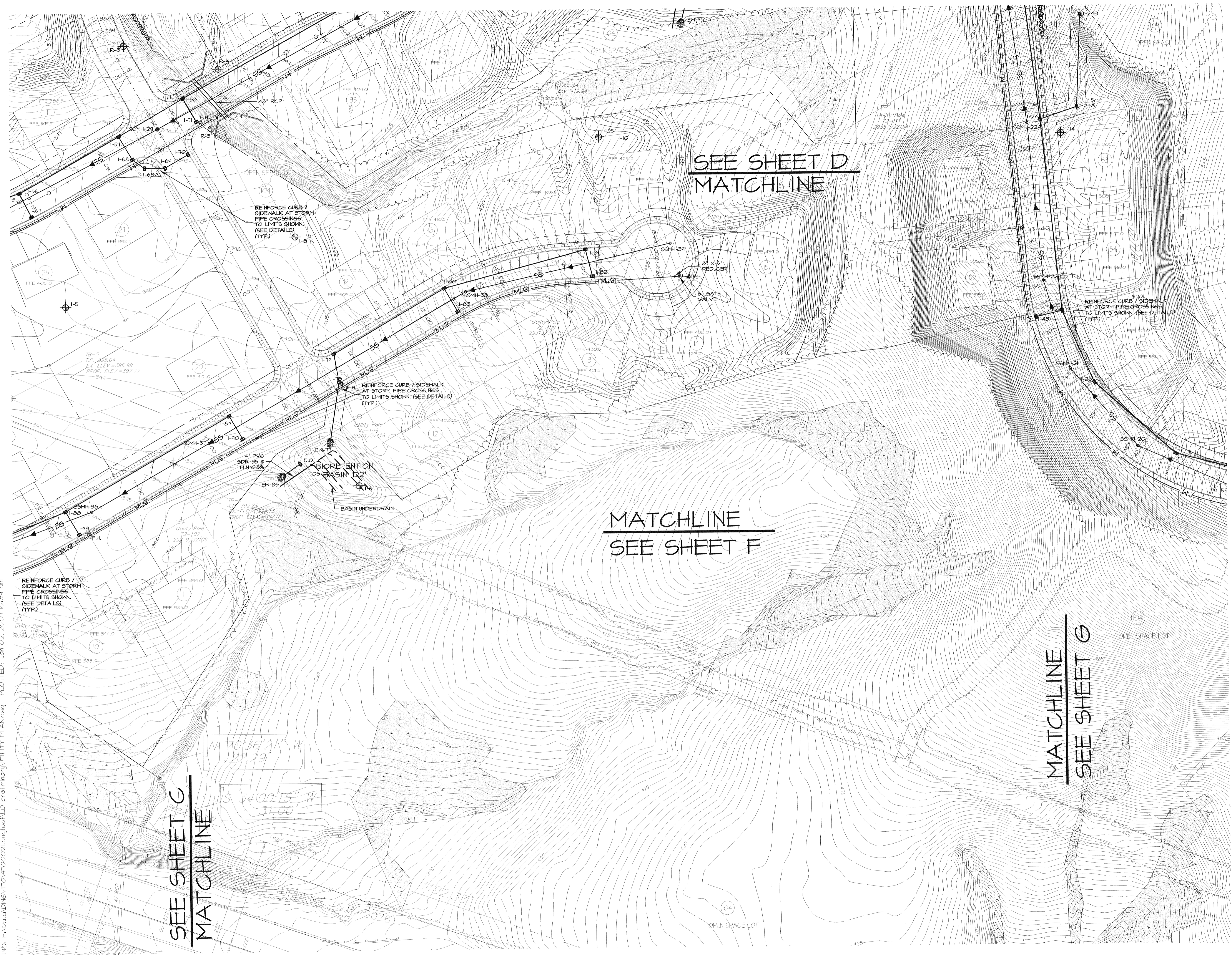
PRELIMINARY SUBDIVISION PLAN

SUBJECT:
UTILITY PLAN D
FOR
LAUFFER HILL
LONDONDERRY TOWNSHIP, DAUPHIN COUNTY, PENNSYLVANIA
CLIENT:
LONGLEAF DEVELOPMENT COMPANY, L.L.C.
c/o MR. GREG BARDELL
1821 OREGON PIKE, SUITE 6
LANCASTER, PA 17601
(717) 591-1644

MANAGER:	BDG	DATE:	JULY 21, 2006
DESIGN:	BDG	PROJECT NO.:	410-002
DRAWN BY:	BLM	DRAWING NO.:	30 OF 72
SCALE:	AS SHOWN		

REVISIONS:	DATE:	BY:
1. PER TOWNSHIP REVIEW	10/19/06	BLM
2. PER TOWNSHIP REVIEW	11/08/06	BLM
3. PER TOWNSHIP REVIEW	12/11/06	BLM
4. PER TOWNSHIP REVIEW	1/21/07	BLM

DRAWING: F:\Data\DWG\410\410002\Longleaf.LD-preliminary\UTILITY PLAN.dwg - PLOTTED: Jan 02, 2007 10:39 am



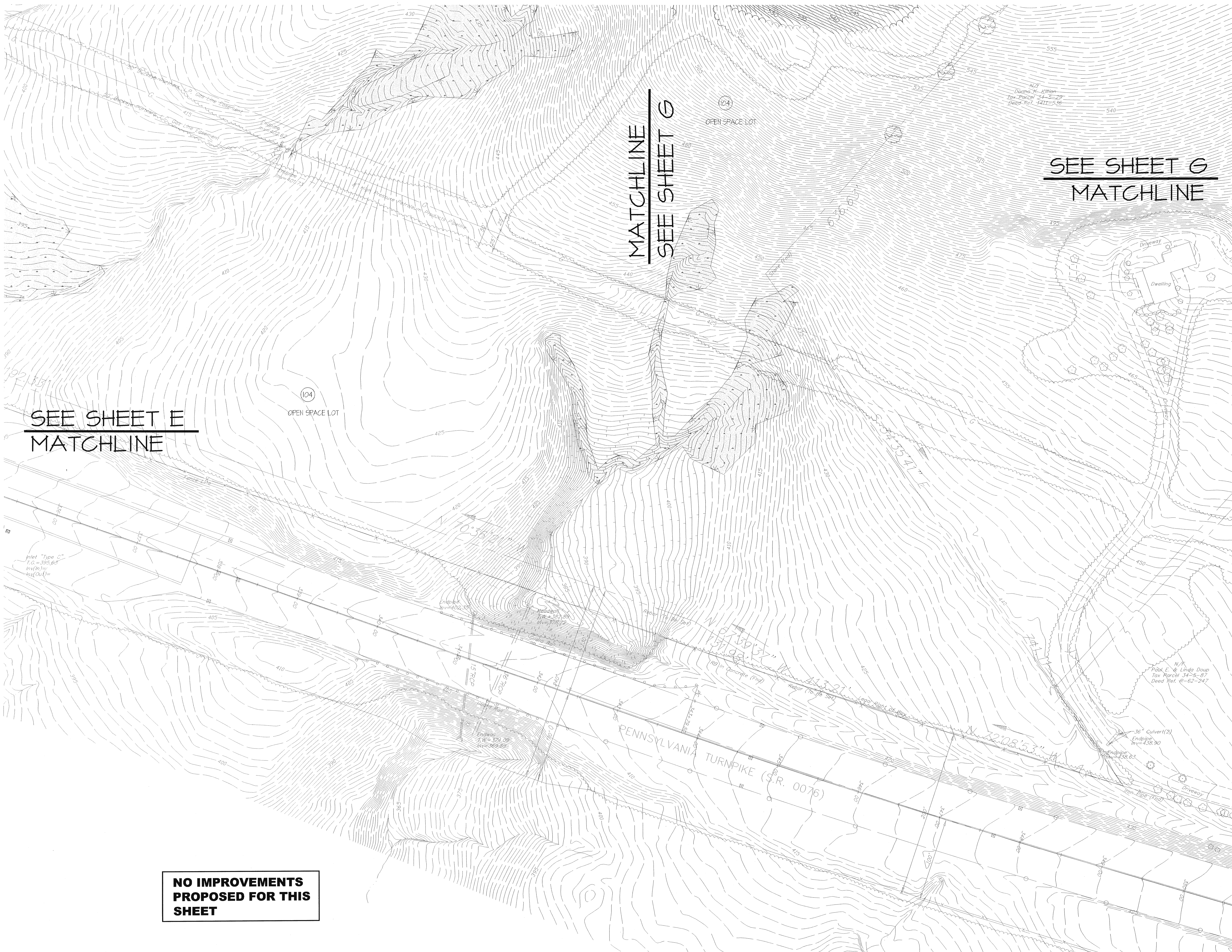
EA
group, inc.
ENGINEERS & LANDSCAPE ARCHITECTS
143 SOUTH BROAD STREET
LITITZ, PA 17543
(717) 626-1271 FAX (717) 626-1040
www.eagroup.com

PRELIMINARY SUBDIVISION PLAN
SUBJECT:
UTILITY PLAN E
FOR
LAUFFER HILL
LONDONDERRY TOWNSHIP, DAUPHIN COUNTY, PENNSYLVANIA
CLIENT:
LONGLEAF DEVELOPMENT COMPANY, L.L.C.
c/o MR. GREG BARDELL
1821 OREGON PIKE, SUITE 6
LANCASTER, PA 17601
(717) 581-1644

MANAGER:	BDG	DATE:	JULY 21, 2006
DESIGN:	BDG	PROJECT NO.:	410-002
DRAWN BY:	BLM	DRAWING NO.:	31 OF 12
SCALE:	AS SHOWN		
REVISIONS:	DATE:	BY:	
1. PER TOWNSHIP REVIEW	10/1/06	BLM	
2. PER TOWNSHIP REVIEW	11/8/06	BLM	
3. PER TOWNSHIP REVIEW	12/11/06	BLM	
4. PER TOWNSHIP REVIEW	12/01	BLM	

DRAWING: F:\Data\DWG\410\410002\Longleaf\LD-preliminary\UTILITY PLAN.dwg - PLOTTED: Jan 02, 2007 10:31 am

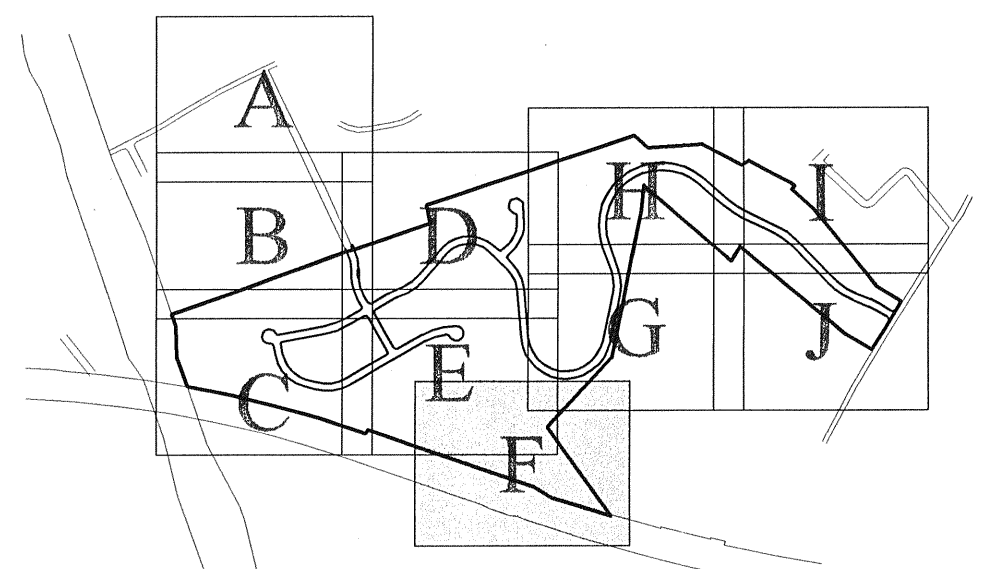
DRAWING: F:\Data\DHG\410\410002Longleaf\LD-preliminary\UTILITY PLAN.dwg - PLOTTED: Jan 02, 2007 10:40 am



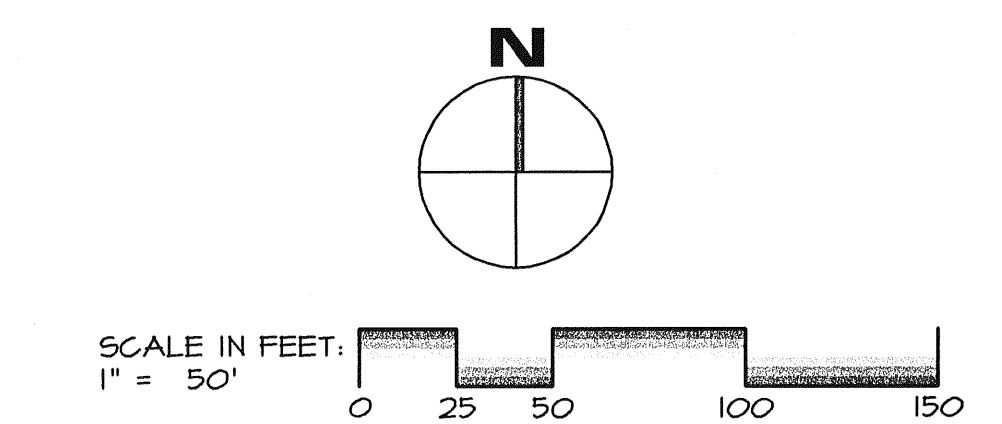
**NO IMPROVEMENTS
PROPOSED FOR THIS
SHEET**

LEGEND

- EXISTING BOUNDARY
- EXISTING ADJOINER BOUNDARY
- EXISTING RIGHT-OF-WAY
- PROPOSED RIGHT-OF-WAY
- EXISTING EDGE OF ROAD
- PROPOSED EDGE OF ROAD
- EXISTING CENTERLINE ROAD
- PROPOSED CENTERLINE ROAD
- PROPOSED LOT LINE
- EXISTING EASEMENT
- PROPOSED EASEMENT
- PROPOSED SETBACK LINE
- EXISTING CONTOUR (5 FT. INTERVAL)
- EXISTING CONTOUR (5 FT. INTERVAL)
- PROPOSED CONTOUR (5 FT. INTERVAL)
- PROPOSED CONTOUR (5 FT. INTERVAL)
- ② PROPOSED LOT NUMBER
- OVERHEAD ELECTRIC WITH POLE
- PROPOSED SANITARY
- PROPOSED FORCE MAIN
- PROPOSED WATERLINE w/ VALVE
- PROPOSED FIRE HYDRANT
- EXISTING GAS LINE
- PROPOSED GAS LINE
- EXISTING TREE LINE
- PROPOSED TREE LINE
- CONCRETE MONUMENT
- IRON PIN/LOT CORNER
- PROPOSED STOP/STREET SIGN
- PROPOSED 25 MPH SPEED LIMIT SIGN
- PROPOSED STREET LIGHT
- STREET ADDRESS NUMBERS
- DETENTION BASIN/POUNDMENT AREA
- POST 100 YR FLOOD PLAIN
- ZONING LINE
- SOIL NAME
- DELINEATED WETLANDS
- PROPOSED STREET/ SHADE TREE
- SOIL PROBE



KEY MAP
SCALE: 1" = 1400'



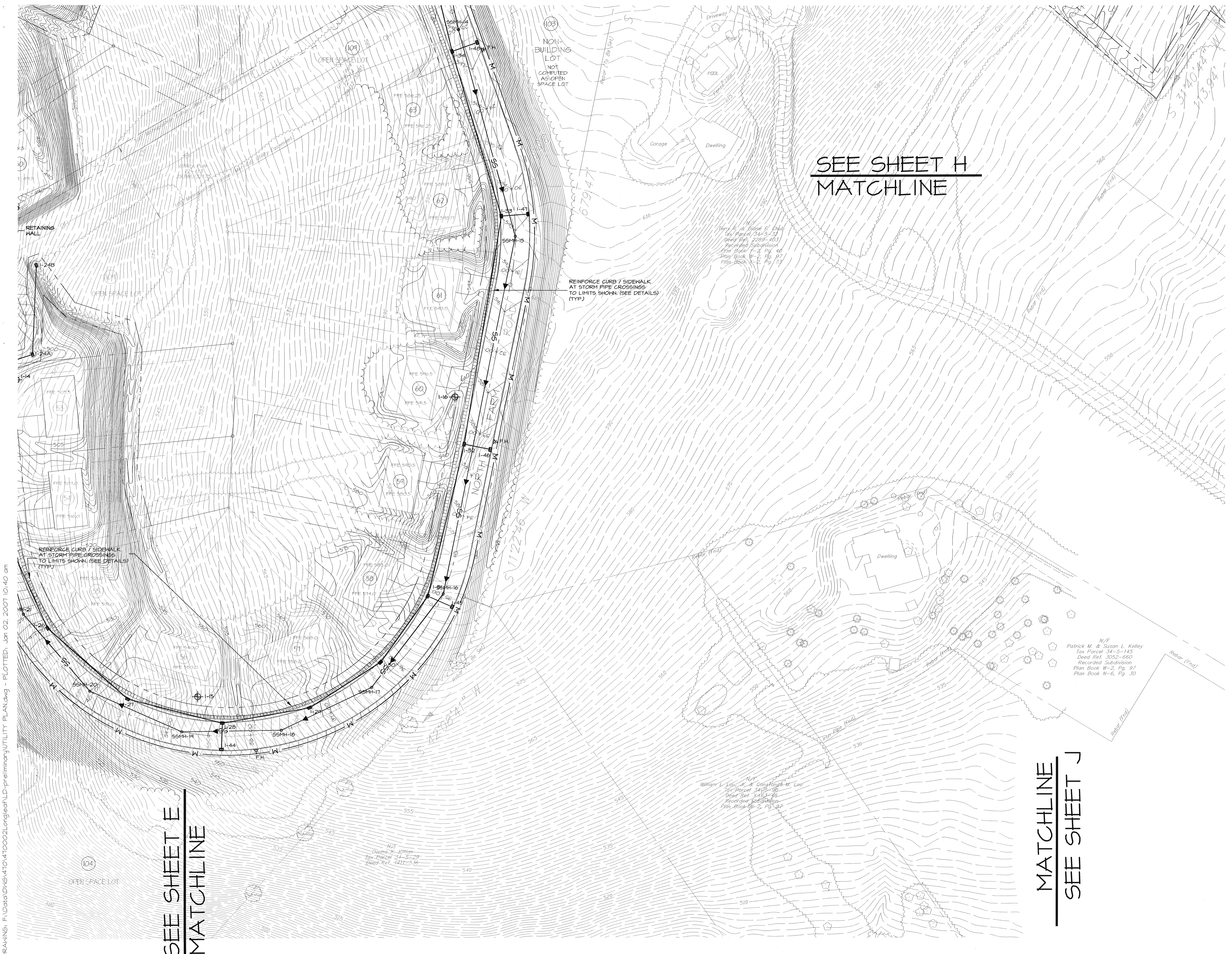
EA
group, inc.
ENGINEERS & LANDSCAPE ARCHITECTS
143 SOUTH BROAD STREET
LITITZ, PA 17543
(717) 626-1271 FAX (717) 626-1040
www.ealogroup.com

PRELIMINARY SUBDIVISION PLAN

SUBJECT:
UTILITY PLAN F
FOR
LAUFFER HILL
LONDONDERRY TOWNSHIP, DAUPHIN COUNTY, PENNSYLVANIA
CLIENT:
LONGLEAF DEVELOPMENT COMPANY, L.L.C.
c/o MR. GREG BARDELL
1821 OREGON PIKE, SUITE 6
LANCASTER, PA 17601
(717) 581-1644

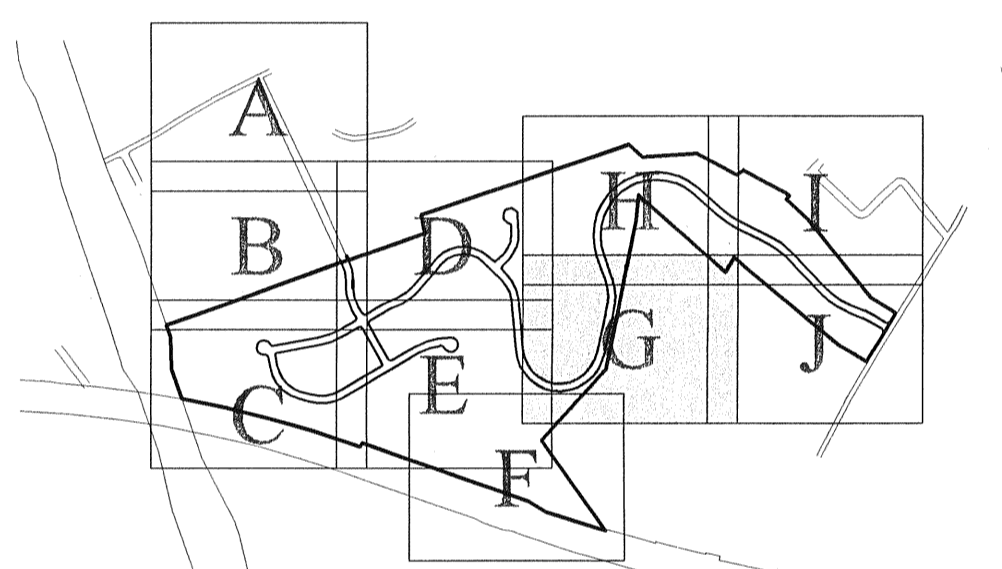
MANAGER:	BDG	DATE:	JULY 21, 2006
DESIGN:	BDG	PROJECT NO.	410-002
DRAWN BY:	BLM	DRAWING NO.	32 OF 72
SCALE:	AS SHOWN		

REVISIONS:	DATE:	BY:
1. PER TOWNSHIP REVIEW	10/9/06	BLM
2. PER TOWNSHIP REVIEW	11/8/06	BLM
3. PER TOWNSHIP REVIEW	12/11/06	BLM
4. PER TOWNSHIP REVIEW	1/2/07	BLM

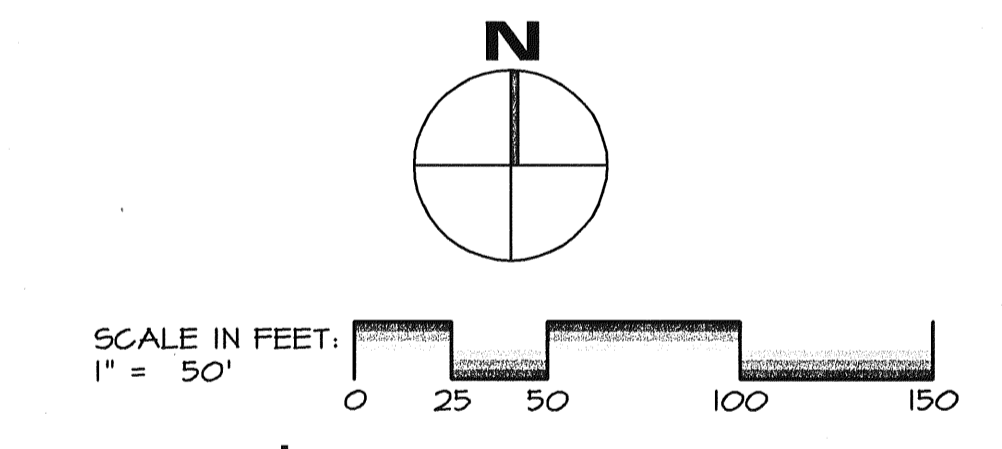


LEGEND

	EXISTING BOUNDARY
	EXISTING ADJOINER BOUNDARY
	EXISTING RIGHT-OF-WAY
	PROPOSED RIGHT-OF-WAY
	EXISTING EDGE OF ROAD
	PROPOSED EDGE OF ROAD
	EXISTING CENTERLINE ROAD
	PROPOSED CENTERLINE ROAD
	PROPOSED LOT LINE
	EXISTING EASEMENT
	PROPOSED EASEMENT
	PROPOSED SETBACK LINE
	EXISTING CONTOUR (1 FT. INTERVAL)
	EXISTING CONTOUR (5 FT. INTERVAL)
	PROPOSED CONTOUR (1 FT. INTERVAL)
	PROPOSED CONTOUR (5 FT. INTERVAL)
	PROPOSED LOT NUMBER
	OVERHEAD ELECTRIC WITH POLE
	PROPOSED SANITARY
	PROPOSED FORCE MAIN
	PROPOSED WATERLINE W/ VALVE
	PROPOSED FIRE HYDRANT
	EXISTING GAS LINE
	PROPOSED GAS LINE
	EXISTING TREE LINE
	PROPOSED TREE LINE
	CONCRETE MONUMENT
	IRON PIN/LOT CORNER
	PROPOSED STOP/STREET SIGN
	PROPOSED 25 MPH SPEED LIMIT SIGN
	PROPOSED STREET LIGHT
	STREET ADDRESS NUMBERS
	DETENTION BASIN/IMPONDMENT AREA
	POST 100 YR FLOOD PLAIN
	ZONING LINE
	SOIL NAME
	DELINEATED WETLANDS
	PROPOSED STREET/ SHADE TREE
	SOIL PROBE



KEY MAP
SCALE: 1" = 1400'



EA
group, inc.
ENGINEERS & LANDSCAPE ARCHITECTS
149 SOUTH BROAD STREET
LITITZ, PA 17543
(717) 626-1271 FAX (717) 626-1040
www.ea-group.com

PRELIMINARY SUBDIVISION PLAN
SUBJECT
UTILITY PLAN G
FOR
LAUFFER HILL
LONDONDERRY TOWNSHIP, DAUPHIN COUNTY, PENNSYLVANIA
CLIENT
LONGLEAF DEVELOPMENT COMPANY, L.L.C.
c/o MR. GREG BARDELL
1821 OREGON PIKE, SUITE 6
LANCASTER, PA 17601
(717) 581-1644

MANAGER:	BDG	DATE:	JULY 21, 2006
DESIGN:	BDG	PROJECT NO.:	410-002
DRAWN BY:	BLM	DRAWING NO.:	33 OF 12
SCALE:	AS SHOWN		

REVISIONS:	DATE:	BY:
1. PER TOWNSHIP REVIEW	10/9/06	BLM
2. PER TOWNSHIP REVIEW	11/8/06	BLM
3. PER TOWNSHIP REVIEW	12/11/06	BLM
4. PER TOWNSHIP REVIEW	1/2/07	BLM

DRAWING: F:\data\DWG\470\470002\longleaf\LD-preliminary\UTILITY PLAN.dwg - PLOTTED: Jan 02, 2007 10:40 am

**SEE SHEET E
MATCHLINE**

**MATCHLINE
SEE SHEET J**

SEE SHEET D
MATCHLINE

MATCHLINE
SEE SHEET I

MATCHLINE
SEE SHEET G

LEGEND

- EXISTING BOUNDARY
- EXISTING ADJONER BOUNDARY
- EXISTING RIGHT-OF-WAY
- PROPOSED RIGHT-OF-WAY
- EXISTING EDGE OF ROAD
- PROPOSED EDGE OF ROAD
- EXISTING CENTERLINE ROAD
- PROPOSED CENTERLINE ROAD
- PROPOSED LOT LINE
- EXISTING EASEMENT
- PROPOSED EASEMENT
- PROPOSED SETBACK LINE
- EXISTING CONTOUR (5 FT. INTERVAL)
- EXISTING CONTOUR (5 FT. INTERVAL)
- PROPOSED CONTOUR (5 FT. INTERVAL)
- PROPOSED CONTOUR (5 FT. INTERVAL)
- PROPOSED LOT NUMBER
- OVERHEAD ELECTRIC WITH POLE
- PROPOSED SANITARY
- PROPOSED FORCE MAIN
- PROPOSED WATERLINE W/ VALVE
- PROPOSED FIRE HYDRANT
- EXISTING GAS LINE
- PROPOSED GAS LINE
- EXISTING TREE LINE
- PROPOSED TREE LINE
- CONCRETE MONUMENT
- IRON PIN/LOT CORNER
- PROPOSED STOP/STREET SIGN
- PROPOSED 25 MPH SPEED LIMIT SIGN
- PROPOSED STREET LIGHT
- STREET ADDRESS NUMBERS
- DETENTION BASIN/IMPONDMENT AREA
- POST 100 YR FLOOD PLAN
- ZONING LINE
- SOIL NAME
- DELINEATED WETLANDS
- PROPOSED STREET/ SHADE TREE
- SOIL PROBE

KEY MAP
SCALE: 1" = 1400'

SCALE IN FEET:
1" = 50'

N

EA
group, inc.
ENGINEERS & LANDSCAPE ARCHITECTS
143 SOUTH BROAD STREET
LITITZ, PA 17543
(717) 626-1271 FAX (717) 626-1040
www.ealogroup.com

PRELIMINARY SUBDIVISION PLAN

SUBJECT:
UTILITY PLAN H
FOR
LAUFFER HILL
LONDONDERRY TOWNSHIP, DAUPHIN COUNTY, PENNSYLVANIA
CLIENT:
LONGLEAF DEVELOPMENT COMPANY, L.L.C.
c/o MR. GREG BARDELL
1821 OREGON PIKE, SUITE 6
LANCASTER, PA 17601
(717) 561-1644

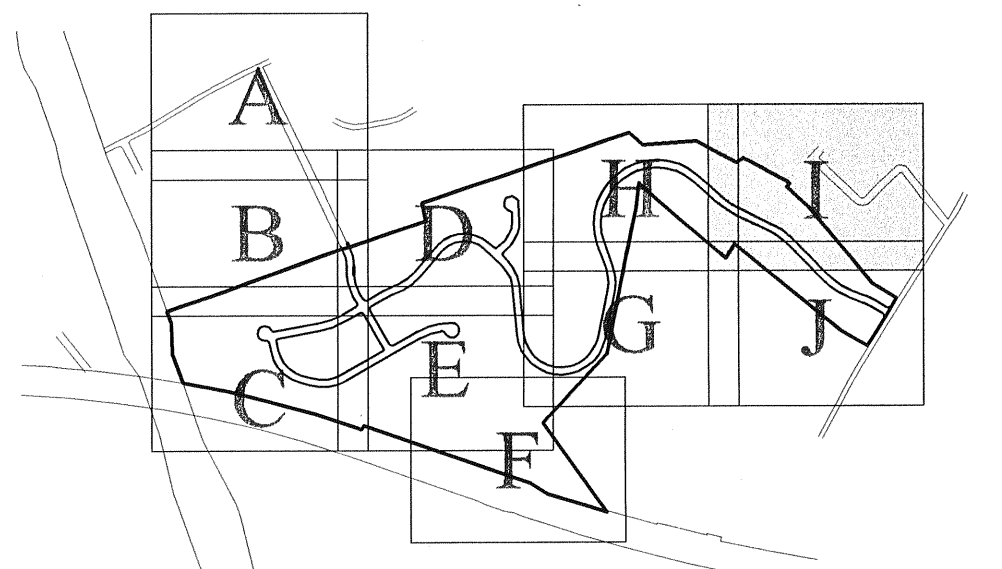
MANAGER:	BDG	DATE:	JULY 21, 2006
DESIGN:	BDG	PROJECT NO.:	410-002
DRAWN BY:	BLM	DRAWING NO.:	34 OF 72
SCALE:	AS SHOWN		
REVISIONS:		DATE:	BY:
1. PER TOWNSHIP REVIEW		10/19/06	BLM
2. PER TOWNSHIP REVIEW		11/18/06	BLM
3. PER TOWNSHIP REVIEW		12/11/06	BLM
4. PER TOWNSHIP REVIEW		12/1/07	BLM

SEE SHEET H
MATCHLINE

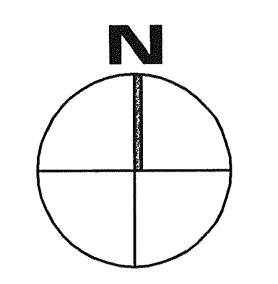


LEGEND

- EXISTING BOUNDARY
- EXISTING ADJOINER BOUNDARY
- EXISTING RIGHT-OF-WAY
- PROPOSED RIGHT-OF-WAY
- EXISTING EDGE OF ROAD
- PROPOSED EDGE OF ROAD
- EXISTING CENTERLINE ROAD
- PROPOSED CENTERLINE ROAD
- PROPOSED LOT LINE
- EXISTING EASEMENT
- PROPOSED EASEMENT
- PROPOSED SETBACK LINE
- EXISTING CONTOUR (1 FT. INTERVAL)
- EXISTING CONTOUR (5 FT. INTERVAL)
- PROPOSED CONTOUR (1 FT. INTERVAL)
- PROPOSED CONTOUR (5 FT. INTERVAL)
- PROPOSED LOT NUMBER
- OVERHEAD ELECTRIC WITH POLE
- PROPOSED SANITARY
- PROPOSED FORCE MAIN
- PROPOSED WATERLINE W/ VALVE
- PROPOSED FIRE HYDRANT
- EXISTING GAS LINE
- PROPOSED GAS LINE
- EXISTING TREE LINE
- PROPOSED TREE LINE
- CONCRETE MONUMENT
- IRON PIN/LOT CORNER
- PROPOSED STOP/STREET SIGN
- PROPOSED 25 MPH SPEED LIMIT SIGN
- PROPOSED STREET LIGHT
- STREET ADDRESS NUMBERS
- DETENTION BASIN/IMPONDMENT AREA
- POST 100 YR FLOOD PLAIN
- ZONING LINE
- SOIL NAME
- DELINEATED WETLANDS
- PROPOSED STREET/ SHADE TREE
- SOIL PROBE



KEY MAP
SCALE: 1" = 1400'



SCALE IN FEET:
1" = 50'

EA
group, inc.
ENGINEERS & LANDSCAPE ARCHITECTS
143 SOUTH BROAD STREET
LITITZ, PA 17543
(717) 626-1211 FAX (717) 626-1040
www.eagroup.com

PRELIMINARY SUBDIVISION PLAN

SUBJECT:
UTILITY PLAN I
FOR
LAUFFER HILL
LONDONDERRY TOWNSHIP, DAUPHIN COUNTY, PENNSYLVANIA
CLIENT:
LONGLEAF DEVELOPMENT COMPANY, L.L.C.
c/o MR. GREG BARDELL
1821 OREGON PIKE, SUITE 6
LANCASTER, PA 17601
(717) 591-1644

MANAGER: BDG DATE: JULY 21, 2006

DESIGN: BDG PROJECT NO. 470-002

DRAWN BY: BLM DRAWING NO. 35 OF 72

SCALE: AS SHOWN

REVISIONS:	DATE:	BY:
1. PER TOWNSHIP REVIEW	10/9/06	BLM
2. PER TOWNSHIP REVIEW	11/8/06	BLM
3. PER TOWNSHIP REVIEW	12/11/06	BLM
4. PER TOWNSHIP REVIEW	1/2/07	BLM

DRAWING: F:\data\DWG\470\470002\longleaf\LD-preliminary\UTILITY PLAN.dwg - PLOTTED: Jan 02, 2007 10:42 am



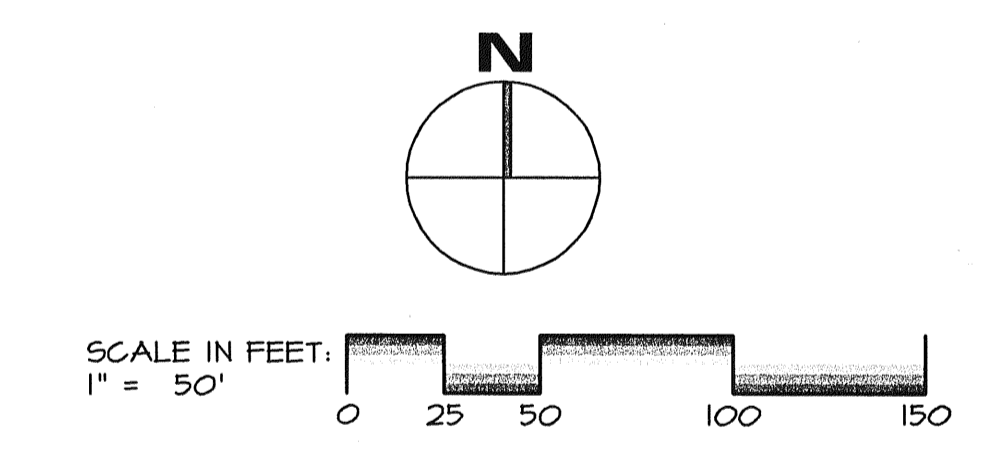
MATCHLINE
SEE SHEET 1

MATCHLINE
SEE SHEET 6

LEGEND

- EXISTING BOUNDARY
- EXISTING ADJOINER BOUNDARY
- EXISTING RIGHT-OF-WAY
- PROPOSED RIGHT-OF-WAY
- EXISTING EDGE OF ROAD
- PROPOSED EDGE OF ROAD
- EXISTING CENTERLINE ROAD
- PROPOSED CENTERLINE ROAD
- PROPOSED LOT LINE
- EXISTING EASEMENT
- PROPOSED EASEMENT
- PROPOSED SETBACK LINE
- EXISTING CONTOUR (1 FT. INTERVAL)
- EXISTING CONTOUR (5 FT. INTERVAL)
- PROPOSED CONTOUR (1 FT. INTERVAL)
- PROPOSED CONTOUR (5 FT. INTERVAL)
- PROPOSED LOT NUMBER
- OVERHEAD ELECTRIC WITH POLE
- PROPOSED SANITARY FORCE MAIN
- PROPOSED WATERLINE W/ VALVE
- PROPOSED FIRE HYDRANT
- EXISTING GAS LINE
- PROPOSED GAS LINE
- EXISTING TREE LINE
- PROPOSED TREE LINE
- CONCRETE MONUMENT
- IRON PIN/LOT CORNER
- PROPOSED STOP/STREET SIGN
- PROPOSED 25 MPH SPEED LIMIT SIGN
- PROPOSED STREET LIGHT
- STREET ADDRESS NUMBERS
- DETENTION BASIN/IMPONDMENT AREA
- POST 100 YR FLOOD PLAIN
- ZONING LINE
- SOIL NAME
- DELINEATED WETLANDS
- PROPOSED STREET/ SHADE TREE
- SOIL PROBE

KEY MAP
SCALE: 1" = 1400'



EA group, inc.
ENGINEERS & LANDSCAPE ARCHITECTS
143 SOUTH BROAD STREET
LITITZ, PA 17543
(717) 626-7071 FAX (717) 626-7040
www.eagroup.com

PRELIMINARY SUBDIVISION PLAN

SUBJECT:
UTILITY PLAN J
FOR
LAUFFER HILL
LONDONDERRY TOWNSHIP, DAUPHIN COUNTY, PENNSYLVANIA

CLIENT:
LONGLEAF DEVELOPMENT COMPANY, L.L.C.
c/o MR. GREG BARDELL
1821 OREGON PIKE, SUITE 6
LANCASTER, PA 17601
(717) 581-1644

MANAGER:	BDG	DATE:	JULY 21, 2006
DESIGN:	BDG	PROJECT NO.:	470-002
DRAWN BY:	BLM	DRAWING NO.:	36 OF 12
SCALE:	AS SHOWN		

REVISIONS:	DATE:	BY:
1. PER TOWNSHIP REVIEW	10/9/06	BLM
2. PER TOWNSHIP REVIEW	11/8/06	BLM
3. PER TOWNSHIP REVIEW	12/11/06	BLM
4. PER TOWNSHIP REVIEW	1/2/07	BLM