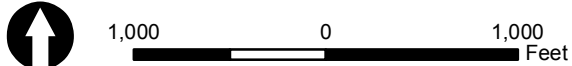


P:\0028\002838_0426\GIS\Projects\Alternative1A_11x17\port.mxd



Mapping derived from data provided by Dauphin County, PAMAP, Halifax Area Water and Sewer Authority, PennDOT, and Perry County.
 9/5/2018 | PM: CJS | GIS: HMG | QA: MDW | R002838.0426



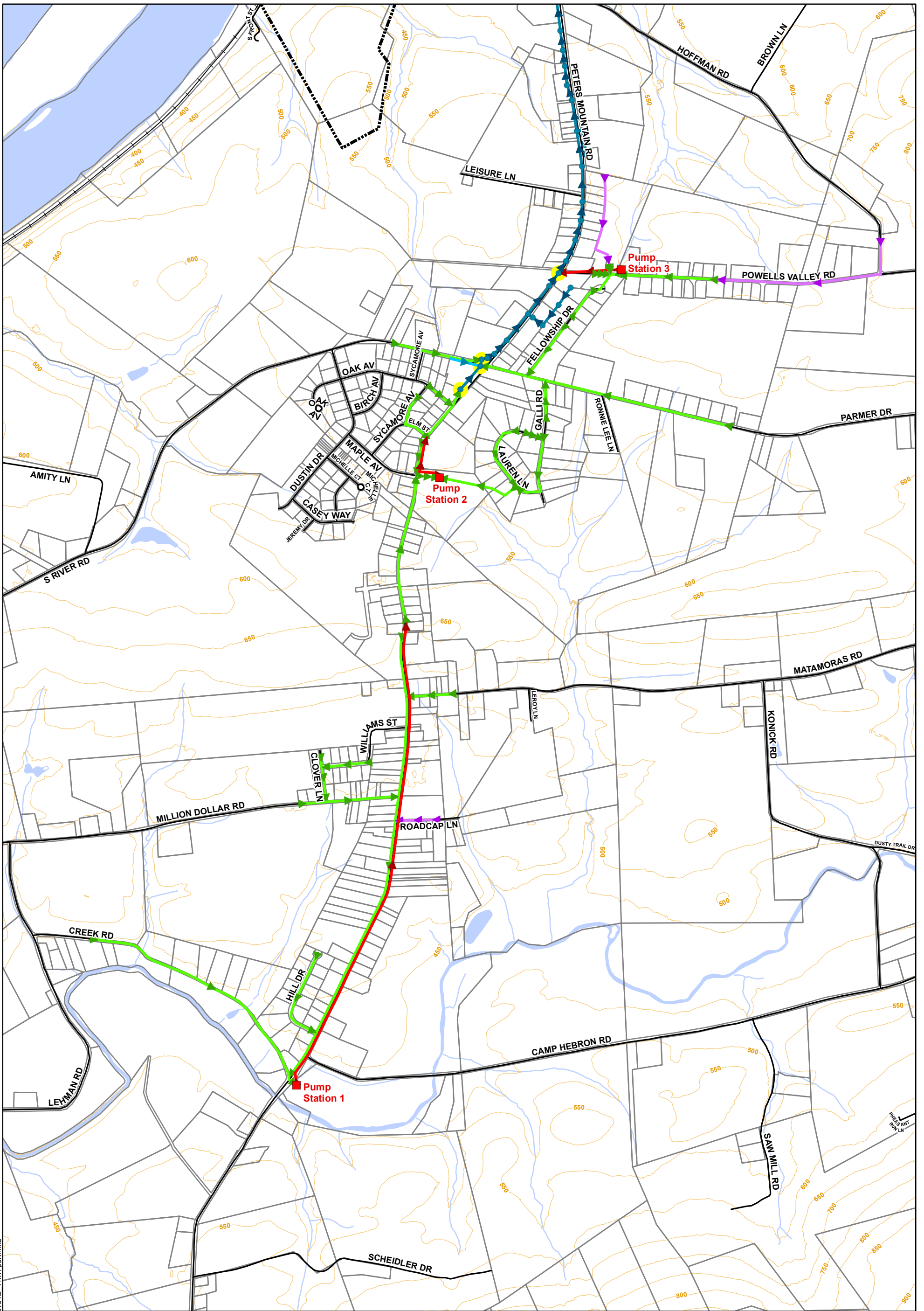
369 East Park Drive
 Harrisburg, PA 17111
 717.564.1121 [phone]
 717.564.1158 [fax]
 www.hrg-inc.com

- Proposed Connection To Existing System
- Proposed Sanitary Sewer Gravity Main
- Proposed Sanitary Sewer Low Pressure Main
- Existing Sanitary Sewer Manhole
- Existing Sanitary Sewer Force Main
- Existing Sanitary Sewer Gravity Main
- Contour 50'
- Road
- +— Railroad
- Parcel
- Municipal Boundary
- Water Body

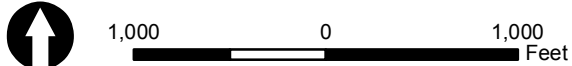
Alternative 1A

Halifax Township

Dauphin County, Pennsylvania



P:\0028\002838_0426\GIS\Projects\Alternative1B_11x17\port.mxd



Mapping derived from data provided by Dauphin County, PAMAP, Halifax Area Water and Sewer Authority, PennDOT, and Perry County.

9/5/2018 | PM: CJS | GIS: HMG | QA: MDW | R002838.0426



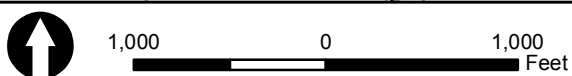
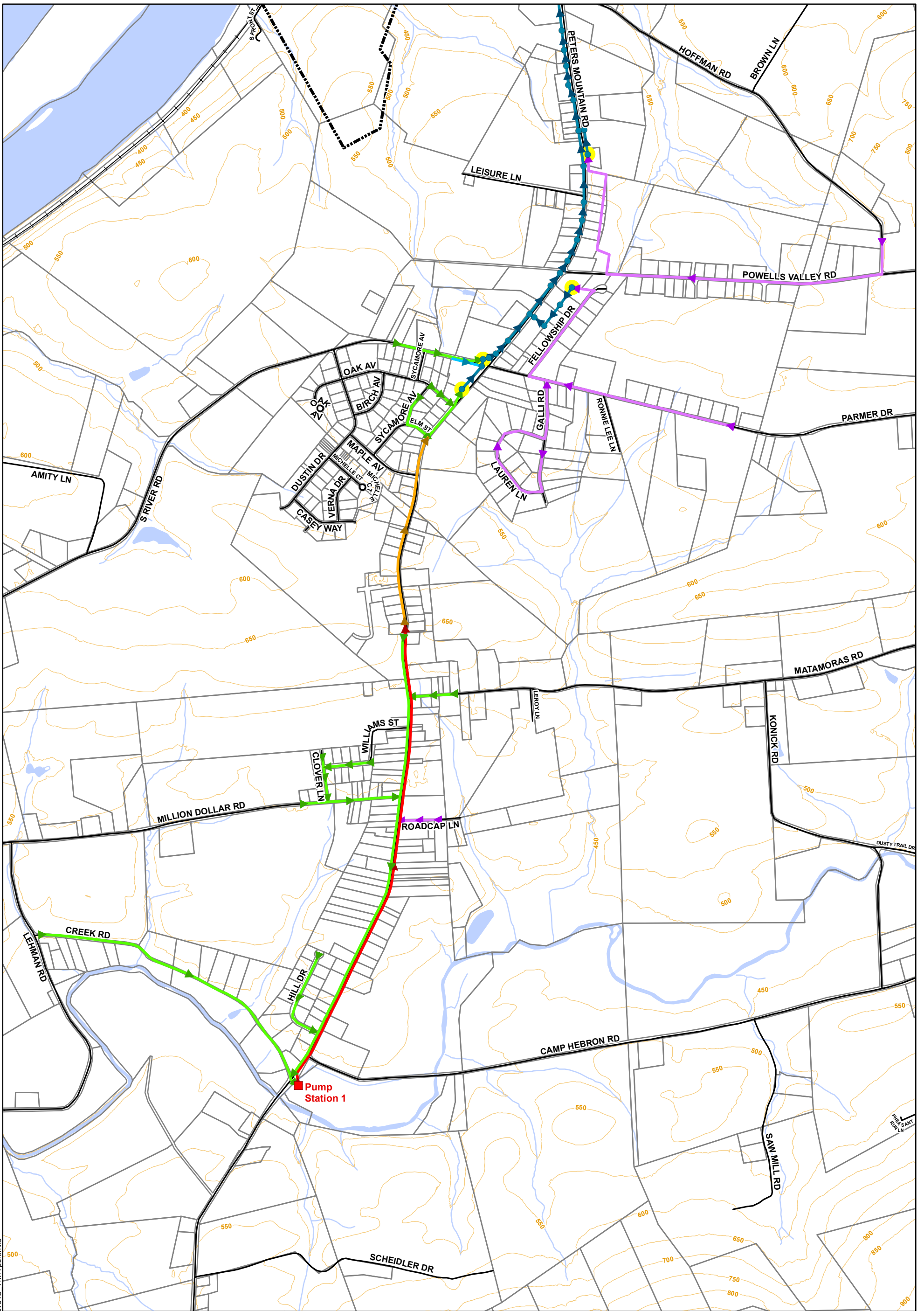
369 East Park Drive
 Harrisburg, PA 17111
 717.564.1121 [phone]
 717.564.1158 [fax]
 www.hrg-inc.com

- Proposed Connection To Existing System
- Proposed Pump Station
- Proposed Sanitary Sewer Gravity Main
- Proposed Sanitary Sewer Low Pressure Main
- Proposed Sanitary Sewer Force Main
- Existing Sanitary Sewer Manhole
- Existing Sanitary Sewer Force Main
- Existing Sanitary Sewer Gravity Main
- Contour 50'
- Road
- Railroad
- Parcel
- Municipal Boundary
- Water Body

Alternative 1B

Halifax Township

Dauphin County, Pennsylvania



Mapping derived from data provided by Dauphin County, PAMAP, Halifax Area Water and Sewer Authority, PennDOT, and Perry County.

9/19/2018 | PM: CJS | GIS: HMG | QA: MDW | R002838.0426

HRG
Herbert Rowland & Grubic, Inc.
Engineering & Related Services
An Employee-Owned Company

369 East Park Drive
Harrisburg, PA 17111
717.564.1121 [phone]
717.564.1158 [fax]
www.hrg-inc.com

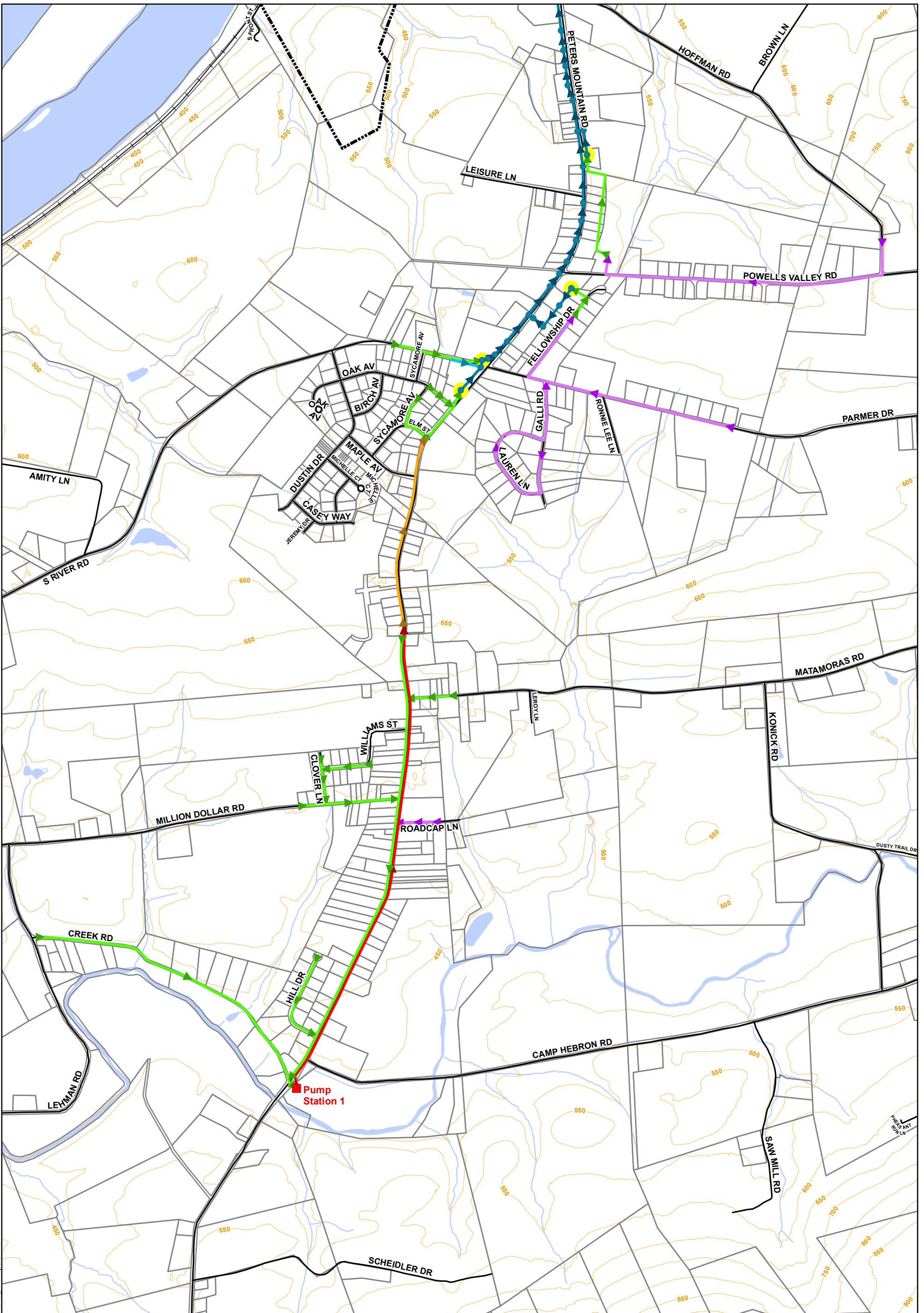
- Proposed Connection To Existing System
- Proposed Pump Station
- Proposed Sanitary Sewer Gravity Main
- Proposed Sanitary Sewer Low Pressure Main
- Proposed Sanitary Sewer Combination Force Main (Low Pressure Laterals)
- Proposed Sanitary Sewer Force Main
- Existing Sanitary Sewer Manhole
- Existing Sanitary Sewer Force Main
- Existing Sanitary Sewer Gravity Main
- Contour 50'
- Road
- Railroad
- Parcel
- Municipal Boundary
- Water Body

Alternative 1C

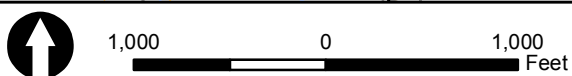
Halifax Township

Dauphin County, Pennsylvania

P:\0028\002838_0426\GIS\Projects\Alternative1C_11x17\port.mxd



P:\0028\002838_0426\GIS\Projects\Alternative 1D_11x17\port.mxd



Mapping derived from data provided by Dauphin County, PAMAP, Halifax Area Water and Sewer Authority, PennDOT, and Perry County.

9/19/2018 | PM: CJS | GIS: HMG | QA: MDW | R002838.0426

HRG
Herbert, Rowland & Grubic, Inc.
Engineering & Related Services
An Employee-Owned Company

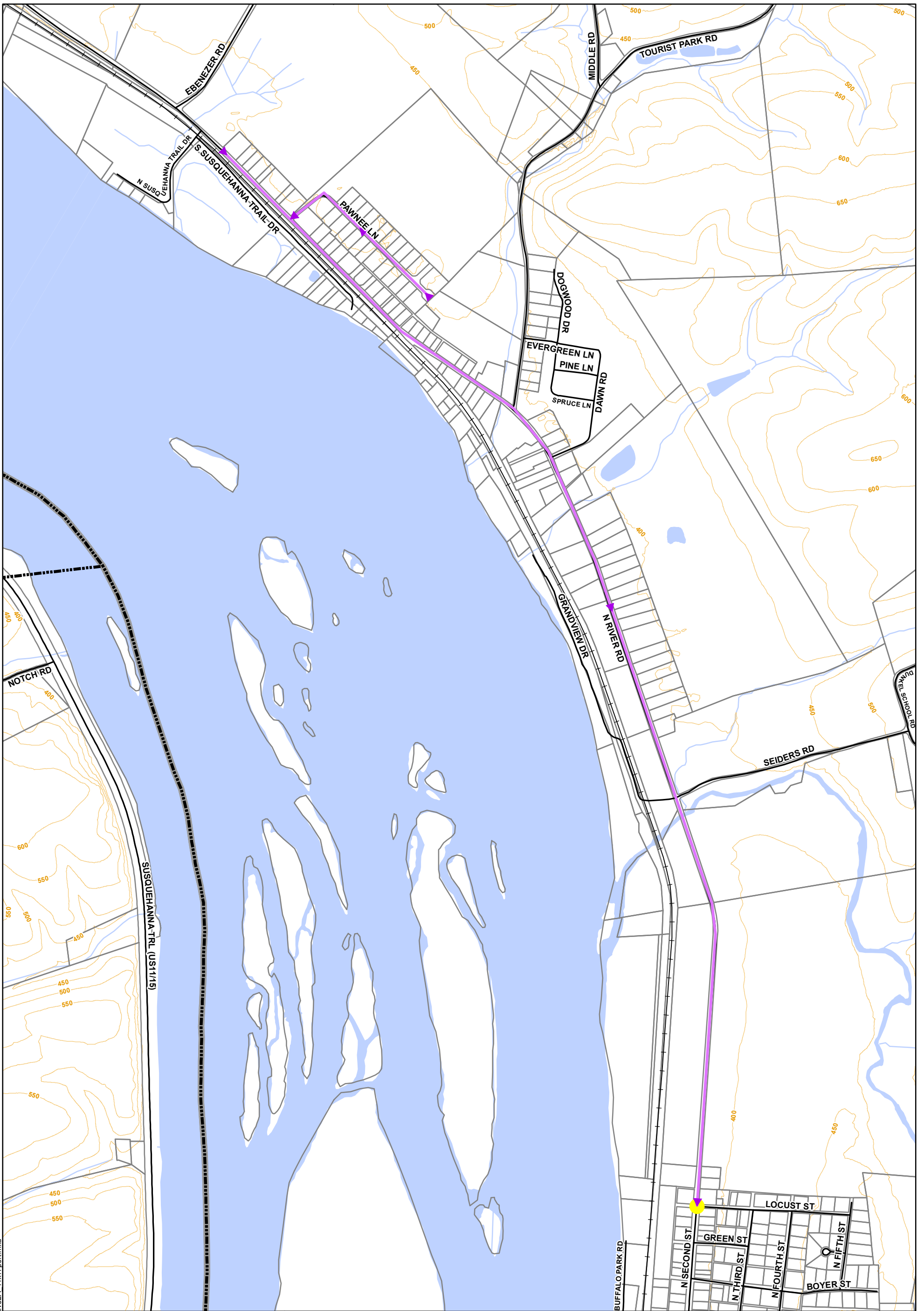
369 East Park Drive
Harrisburg, PA 17111
717.564.1121 [phone]
717.564.1158 [fax]
www.hrg-inc.com

- Proposed Connection To Existing System
- Proposed Pump Station
- Proposed Sanitary Sewer Gravity Main
- Proposed Sanitary Sewer Low Pressure Main
- Proposed Sanitary Sewer Combination Force Main (Low Pressure Laterals)
- Proposed Sanitary Sewer Force Main
- Existing Sanitary Sewer Manhole
- Existing Sanitary Sewer Force Main
- Existing Sanitary Sewer Gravity Main
- Contour 50'
- Road
- Railroad
- Parcel
- Municipal Boundary
- Water Body

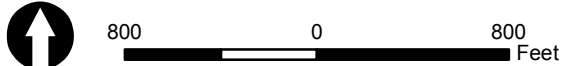
Alternative 1D

Halifax Township

Dauphin County, Pennsylvania



P:\0028\002838_0426\GIS\Projects\Alternative2A_11x17\port.mxd



Mapping derived from data provided by Dauphin County, PAMAP, PennDOT, and Perry County.

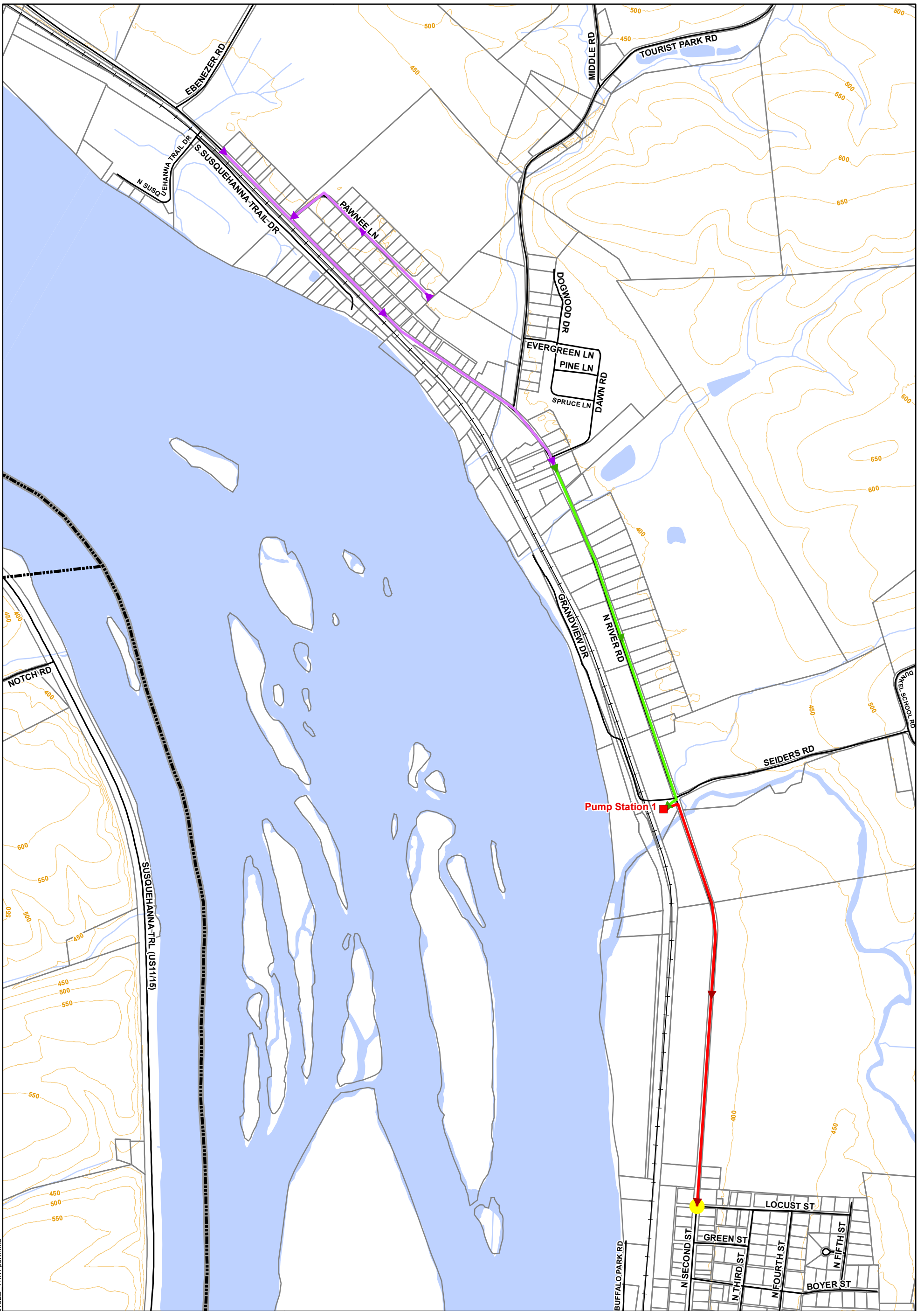
9/5/2018 | PM: CJS | GIS: HMG | QA: MDW | R002838.0426

HRG
Herbert, Rowland & Grubic, Inc.
Engineering & Related Services
An Employee-Owned Company

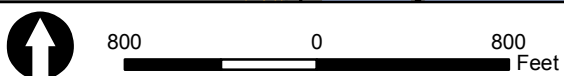
369 East Park Drive
Harrisburg, PA 17111
717.564.1121 [phone]
717.564.1158 [fax]
www.hrg-inc.com

- Proposed Connection To Existing System
- Proposed Sanitary Sewer Low Pressure Main
- Contour 50'
- Road
- Railroad
- Parcel
- Municipal Boundary
- County Boundary
- Water Body

Alternative 2A
Halifax Township
Dauphin County, Pennsylvania



P:\0028\002838_0426\GIS\Projects\Alternative2B_11x17\port.mxd



Mapping derived from data provided by Dauphin County, PAMAP, PennDOT, and Perry County.

9/5/2018 | PM: CJS | GIS: HMG | QA: MDW | R002838.0426



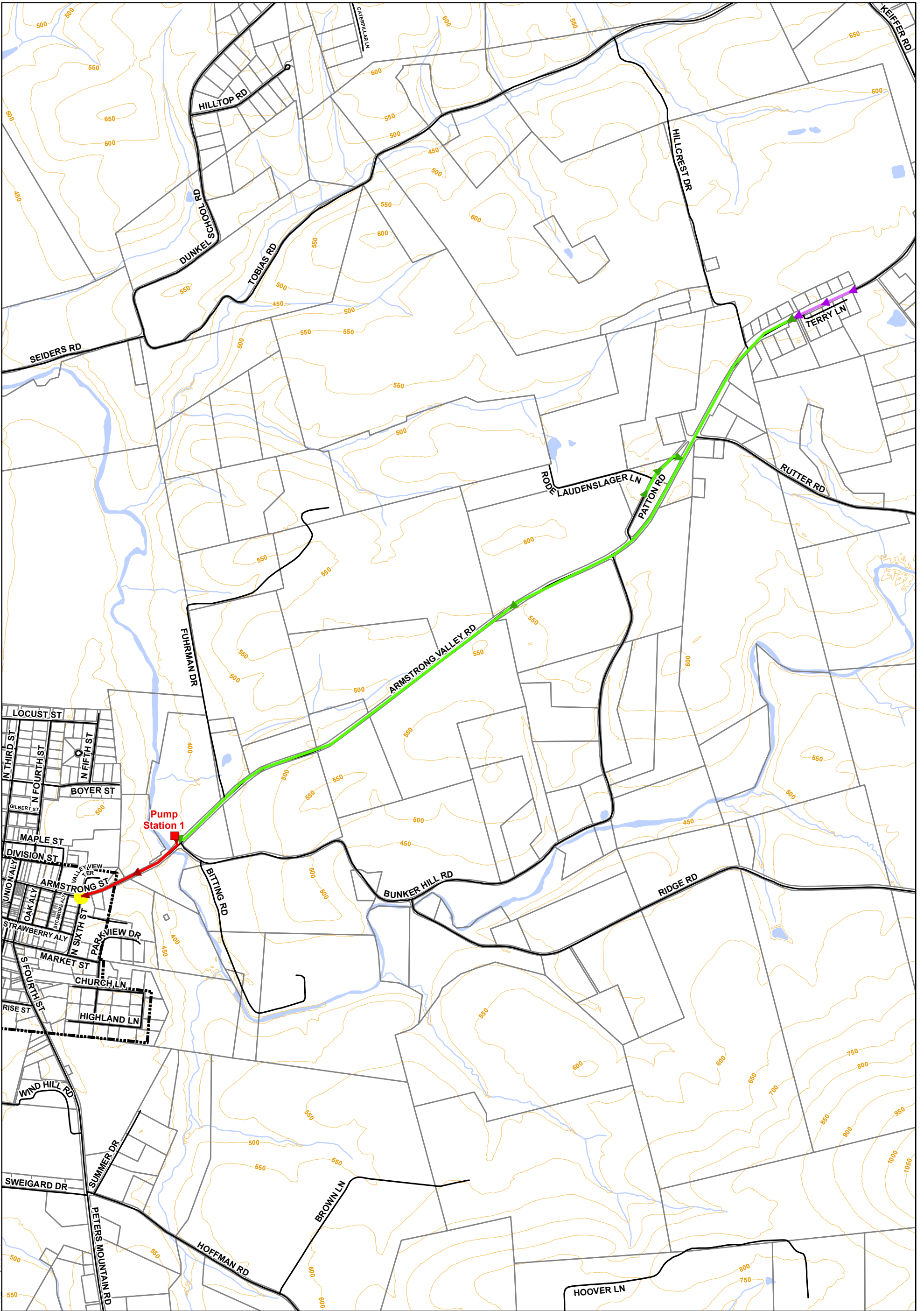
369 East Park Drive
Harrisburg, PA 17111
717.564.1121 [phone]
717.564.1158 [fax]
www.hrg-inc.com



- | | | | |
|--|---|--|--------------------|
| | Proposed Connection To Existing System | | Contour 50' |
| | Proposed Pump Station | | Road |
| | Proposed Sanitary Sewer Gravity Main | | Railroad |
| | Proposed Sanitary Sewer Low Pressure Main | | Parcel |
| | Proposed Sanitary Sewer Force Main | | Municipal Boundary |
| | | | County Boundary |
| | | | Water Body |







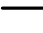
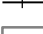



Alternative 2B

Halifax Township

Dauphin County, Pennsylvania

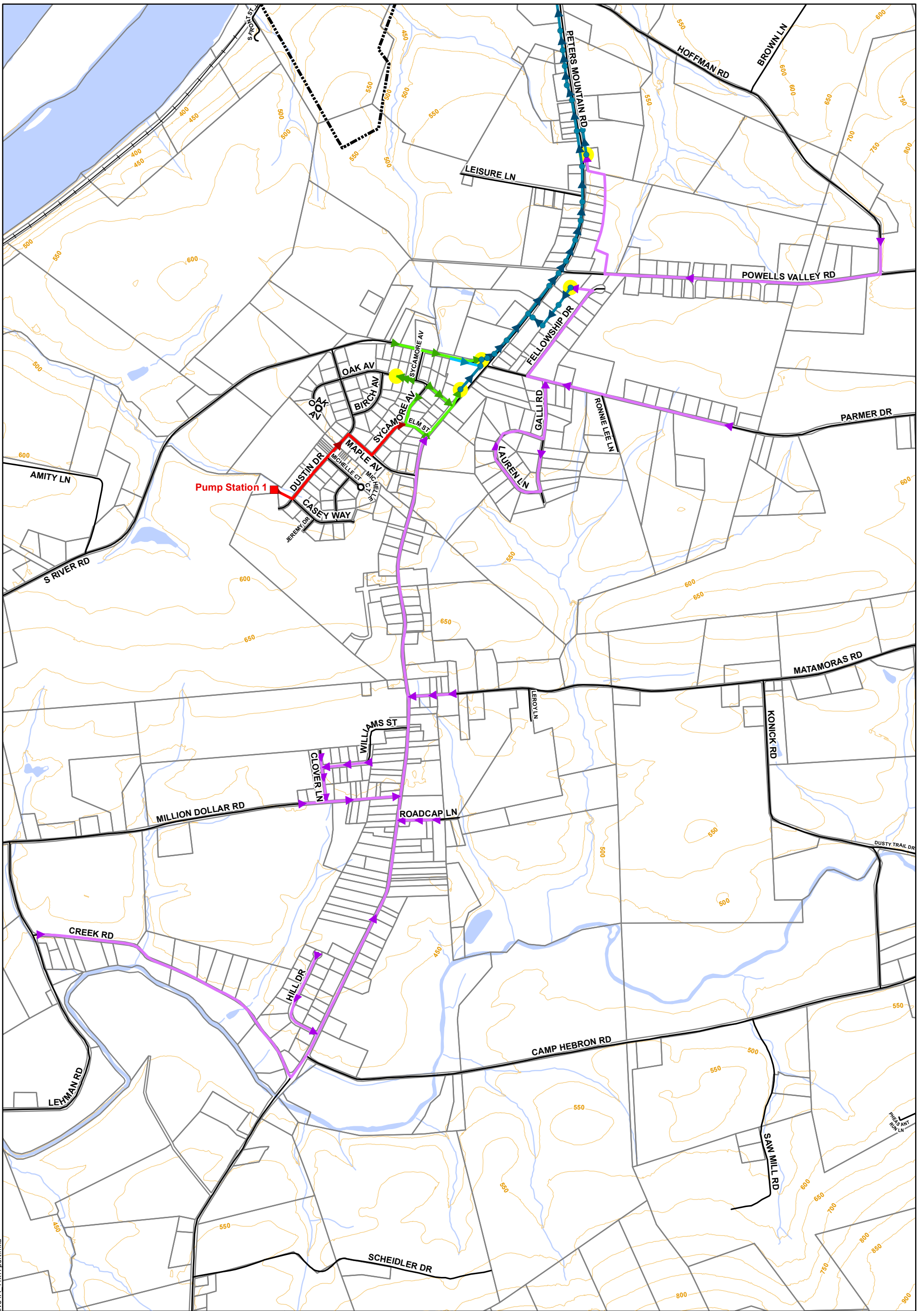



 1,000 0 1,000 Feet
 Mapping derived from data provided by Dauphin County, PAMAP, PennDOT, and Perry County.
 9/5/2018 | PM: CJS | GIS: HMG | QA: MDW | R002838.0426

369 East Park Drive
Harrisburg, PA 17111
717.564.1121 [phone]
717.564.1158 [fax]
www.hrg-inc.com
Herbert, Rowland & Grubic, Inc.
 Engineering & Related Services
 An Employee-Owned Company


-  Proposed Connection To Existing System
-  Proposed Pump Station
-  Proposed Sanitary Sewer Gravity Main
-  Proposed Sanitary Sewer Low Pressure Main
-  Proposed Sanitary Sewer Force Main
-  Contour 50'
-  Road
-  Railroad
-  Parcel
-  Municipal Boundary
-  Water Body

Alternative 3
Halifax Township
Dauphin County, Pennsylvania


P:\0028\002838_0426\GIS\Projects\Alternative3_11x17\port.mxd










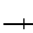




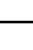

P:\0028\002838_0426\GIS\Projects\Alternative4A_11x17\port.mxd


1,000 0 1,000 Feet

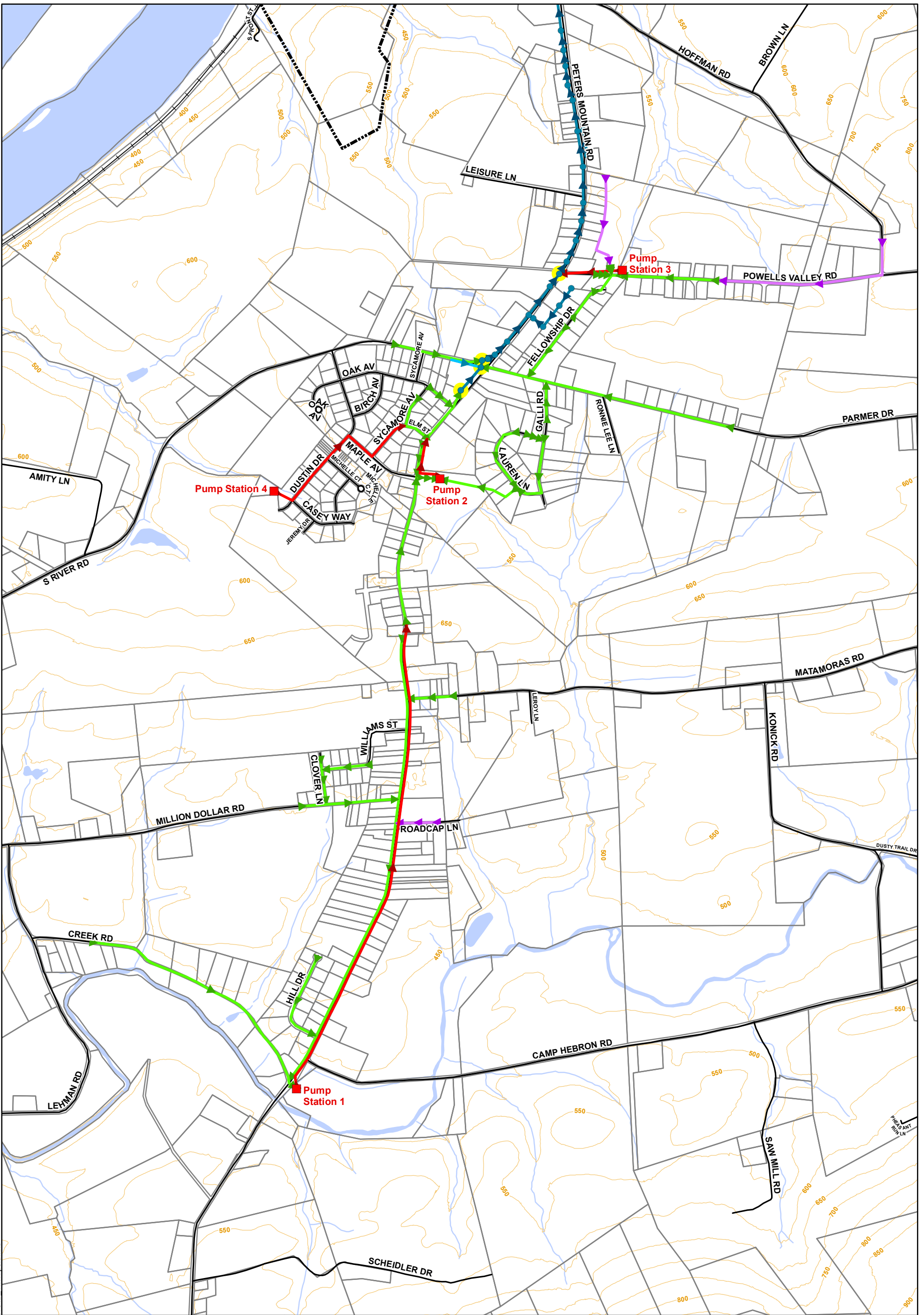
Mapping derived from data provided by Dauphin County, PAMAP, Halifax Area Water and Sewer Authority, PennDOT, and Perry County.
 9/5/2018 | PM: CJS | GIS: HMG | QA: MDW | R002838.0426



369 East Park Drive
Harrisburg, PA 17111
717.564.1121 [phone]
717.564.1158 [fax]
www.hrg-inc.com

- | | | | |
|---|---|---|--------------------------------------|
|  | Proposed Connection To Existing System |  | Existing Sanitary Sewer Gravity Main |
|  | Proposed Pump Station |  | Contour 50' |
|  | Proposed Sanitary Sewer Gravity Main |  | Road |
|  | Proposed Sanitary Sewer Low Pressure Main |  | Railroad |
|  | Proposed Sanitary Sewer Force Main |  | Parcel |
|  | Existing Sanitary Sewer Manhole |  | Municipal Boundary |
|  | Existing Sanitary Sewer Force Main |  | Water Body |

Alternative 4A
Halifax Township
Dauphin County, Pennsylvania



Mapping derived from data provided by Dauphin County, PAMAP, Halifax Area Water and Sewer Authority, PennDOT, and Perry County.

 9/19/2018 | PM: CJS | GIS: HMG | QA: MDW | R002838.0426

Herbert Rowland & Grubic, Inc.
 Engineering & Related Services
 An Employee-Owned Company

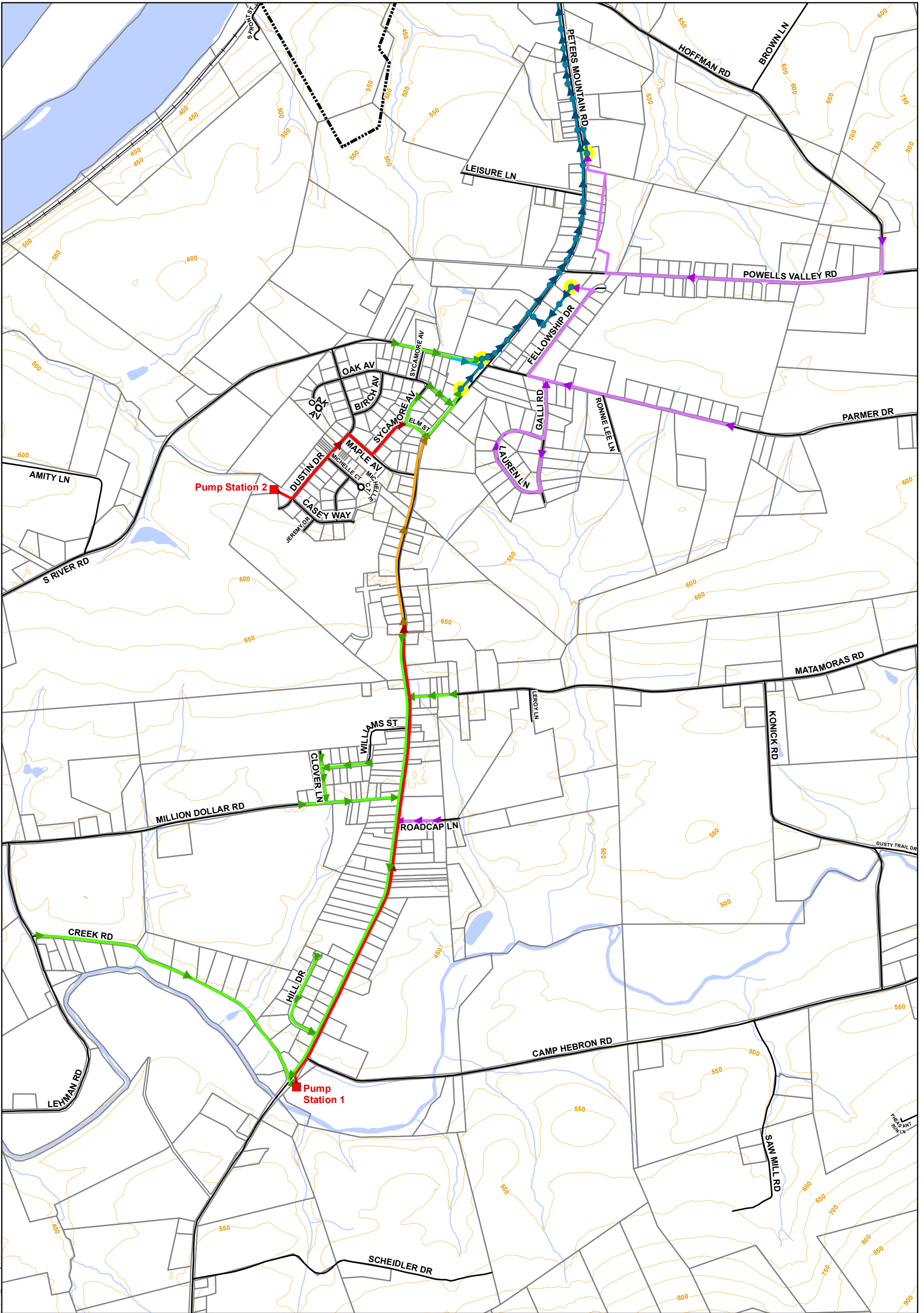
369 East Park Drive
 Harrisburg, PA 17111
 717.564.1121 [phone]
 717.564.1158 [fax]
 www.hrg-inc.com

- | | |
|---|--------------------------------------|
| Proposed Connection To Existing System | Existing Sanitary Sewer Gravity Main |
| Proposed Pump Station | Contour 50' |
| Proposed Sanitary Sewer Gravity Main | Road |
| Proposed Sanitary Sewer Low Pressure Main | Railroad |
| Proposed Sanitary Sewer Force Main | Parcel |
| Existing Sanitary Sewer Manhole | Municipal Boundary |
| Existing Sanitary Sewer Force Main | Water Body |

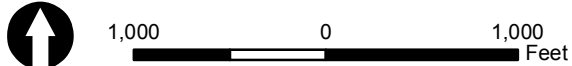
Alternative 4B

Halifax Township

Dauphin County, Pennsylvania



P:\0028\002838_0426\GIS\Projects\Alternative4C_11x17port.mxd



Mapping derived from data provided by Dauphin County, PAMAP, Halifax Area Water and Sewer Authority, PennDOT, and Perry County.

9/19/2018 | PM: CJS | GIS: HMG | QA: MDW | R002838.0426

HRG
Herbert, Rowland & Grubic, Inc.
Engineering & Related Services
An Employee-Owned Company

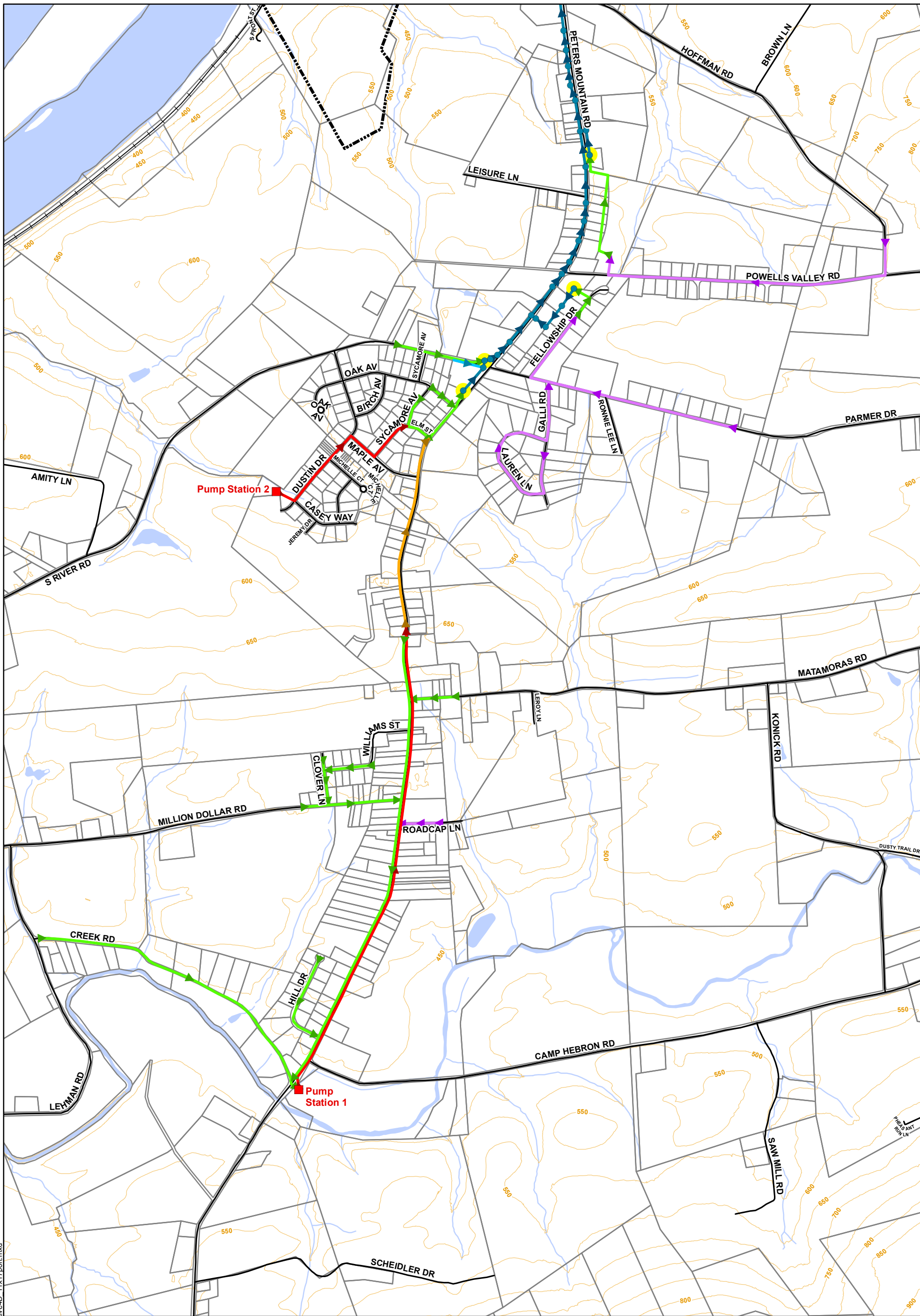
369 East Park Drive
Harrisburg, PA 17111
717.564.1121 [phone]
717.564.1158 [fax]
www.hrg-inc.com

- Proposed Connection To Existing System
- Proposed Pump Station
- Proposed Sanitary Sewer Gravity Main
- Proposed Sanitary Sewer Low Pressure Main
- Proposed Sanitary Sewer Combination Force Main (Low Pressure Laterals)
- Proposed Sanitary Sewer Force Main
- Existing Sanitary Sewer Manhole
- Existing Sanitary Sewer Force Main
- Existing Sanitary Sewer Gravity Main
- Contour 50'
- Road
- Railroad
- Parcel
- Municipal Boundary
- Water Body

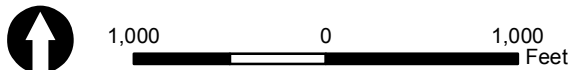
Alternative 4C

Halifax Township

Dauphin County, Pennsylvania



P:\0028\002838_0426\GIS\Projects\Alternative4D_11x17\port.mxd



Mapping derived from data provided by Dauphin County, PAMAP, Halifax Area Water and Sewer Authority, PennDOT, and Perry County.

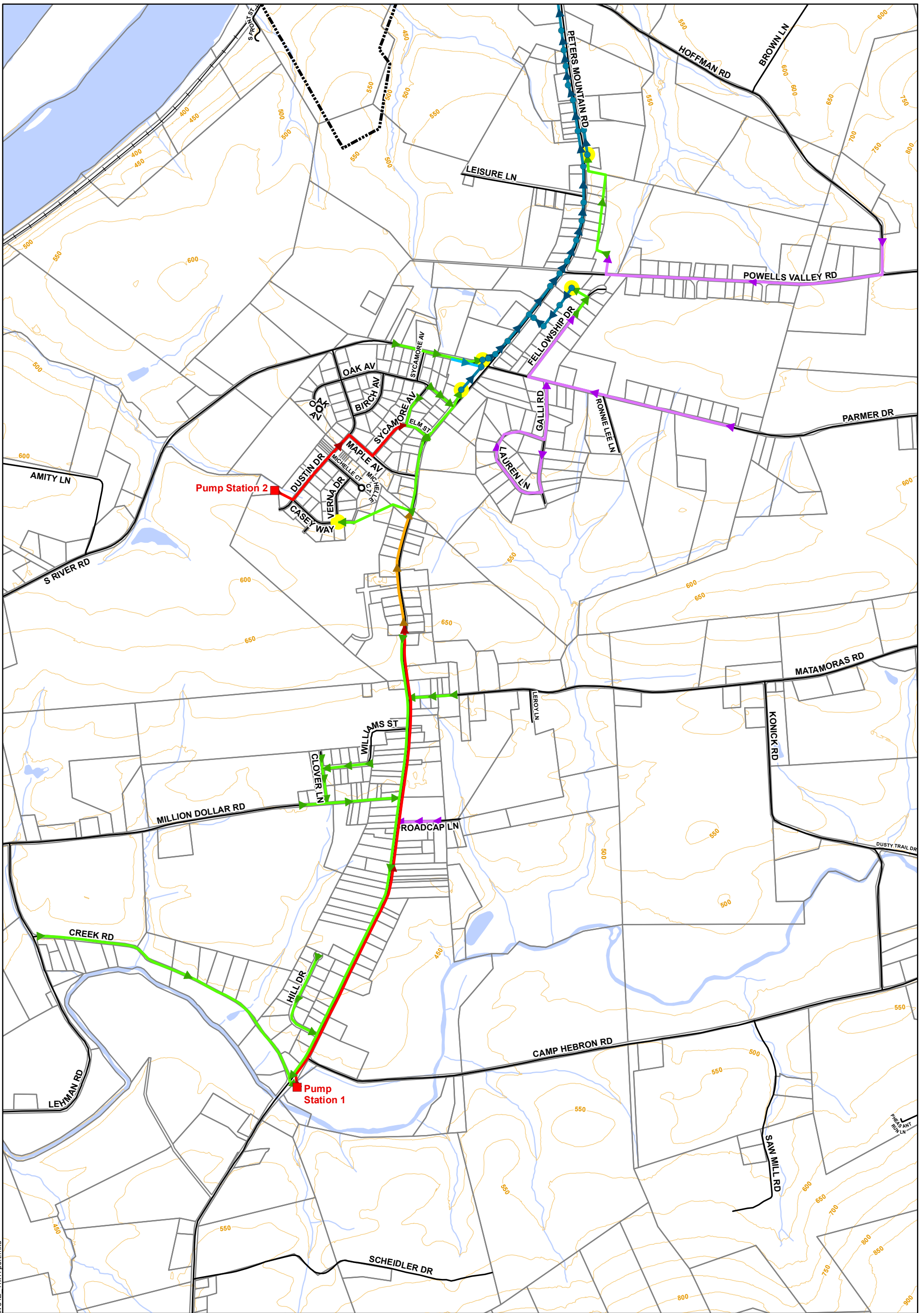
9/19/2018 | PM: CJS | GIS: HMG | QA: MDW | R002838.0426



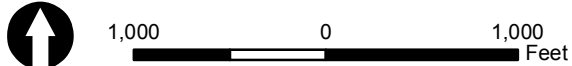
369 East Park Drive
Harrisburg, PA 17111
717.564.1121 [phone]
717.564.1158 [fax]
www.hrg-inc.com

- Proposed Connection To Existing System
- Proposed Pump Station
- ▶▶▶ Proposed Sanitary Sewer Gravity Main
- ▶▶▶ Proposed Sanitary Sewer Low Pressure Main
- ▶▶▶ Proposed Sanitary Sewer Combination Force Main (Low Pressure Laterals)
- ▶▶▶ Proposed Sanitary Sewer Force Main
- Existing Sanitary Sewer Manhole
- ▶▶▶ Existing Sanitary Sewer Force Main
- ▶▶▶ Existing Sanitary Sewer Gravity Main
- Contour 50'
- Road
- Railroad
- Parcel
- Municipal Boundary
- Water Body

Alternative 4D
Halifax Township
Dauphin County, Pennsylvania



P:\0028\002838_0426\GIS\Projects\Alternative4E_11x17\port.mxd



Mapping derived from data provided by Dauphin County, PAMAP, Halifax Area Water and Sewer Authority, PennDOT, and Perry County.
 9/19/2018 PM: CJS GIS: HMG QA: MDW R002838.0426



369 East Park Drive
Harrisburg, PA 17111
717.564.1121 [phone]
717.564.1158 [fax]
www.hrg-inc.com

- Proposed Connection To Existing System
- Proposed Pump Station
- Proposed Sanitary Sewer Gravity Main
- Proposed Sanitary Sewer Low Pressure Main
- Proposed Sanitary Sewer Combination Force Main (Low Pressure Laterals)
- Proposed Sanitary Sewer Force Main
- Existing Sanitary Sewer Manhole

- Existing Sanitary Sewer Force Main
- Existing Sanitary Sewer Gravity Main
- Contour 50'
- Road
- Railroad
- Parcel
- Municipal Boundary
- Water Body

Alternative 4E

Halifax Township

Dauphin County, Pennsylvania