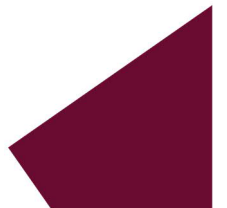


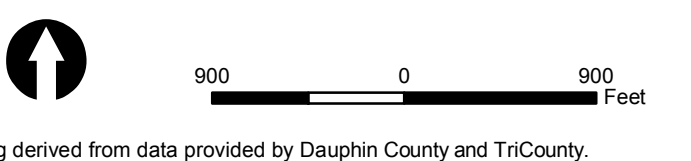
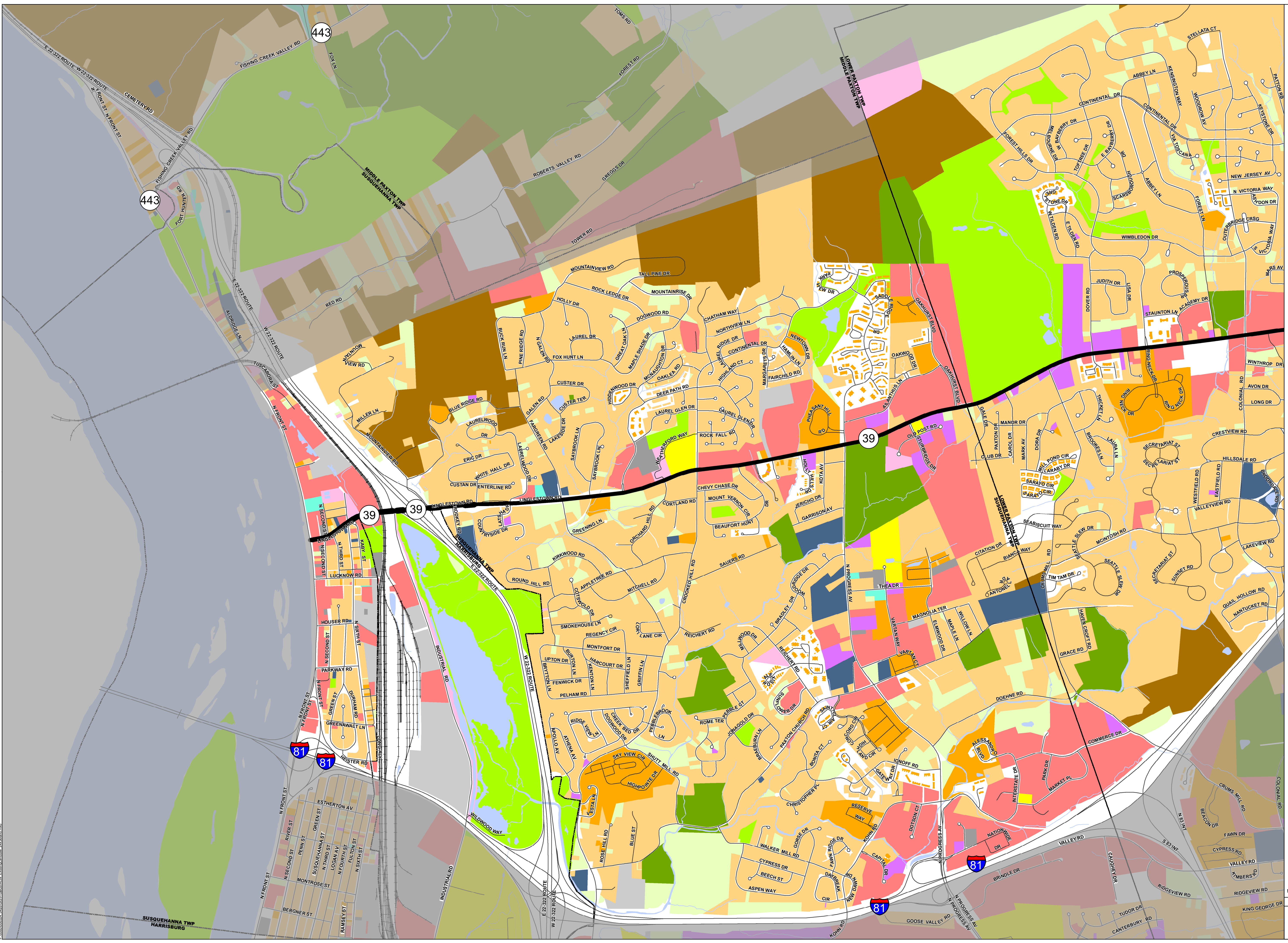
LAND USE PER
MUNICIPALITY



Existing Land Use State Route 39 Corridor Susquehanna Township Dauphin County, Pennsylvania

-  PA Route 39
-  Street
-  Municipal Boundary
-  Railroad
-  Residential - Estimated Medium Density
-  Residential - Estimated High Density
-  Vacant Land
-  Recreational Land
-  Farm Land
-  Natural Resources
-  Commercial / Office
-  Church / Cemetary
-  Medical
-  Educational / Library
-  State / Municipal / Utility
-  Misc Land
-  Industrial
-  Parking
-  Water

NOTE: Land use has been derived from the Dauphin County parcel land use attribute.



Mapping derived from data provided by Dauphin County and TriCounty.









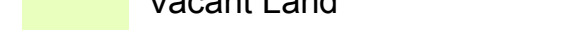

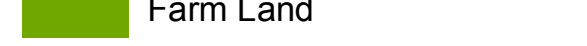




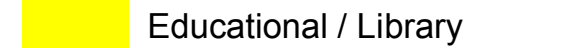



12/7/2017 PM: EJS GIS: BLS QA: MDW R006524.0426

HRG
Herbert Rowland & Grubb, Inc.
Engineering & Related Services
An Employee-Owned Company

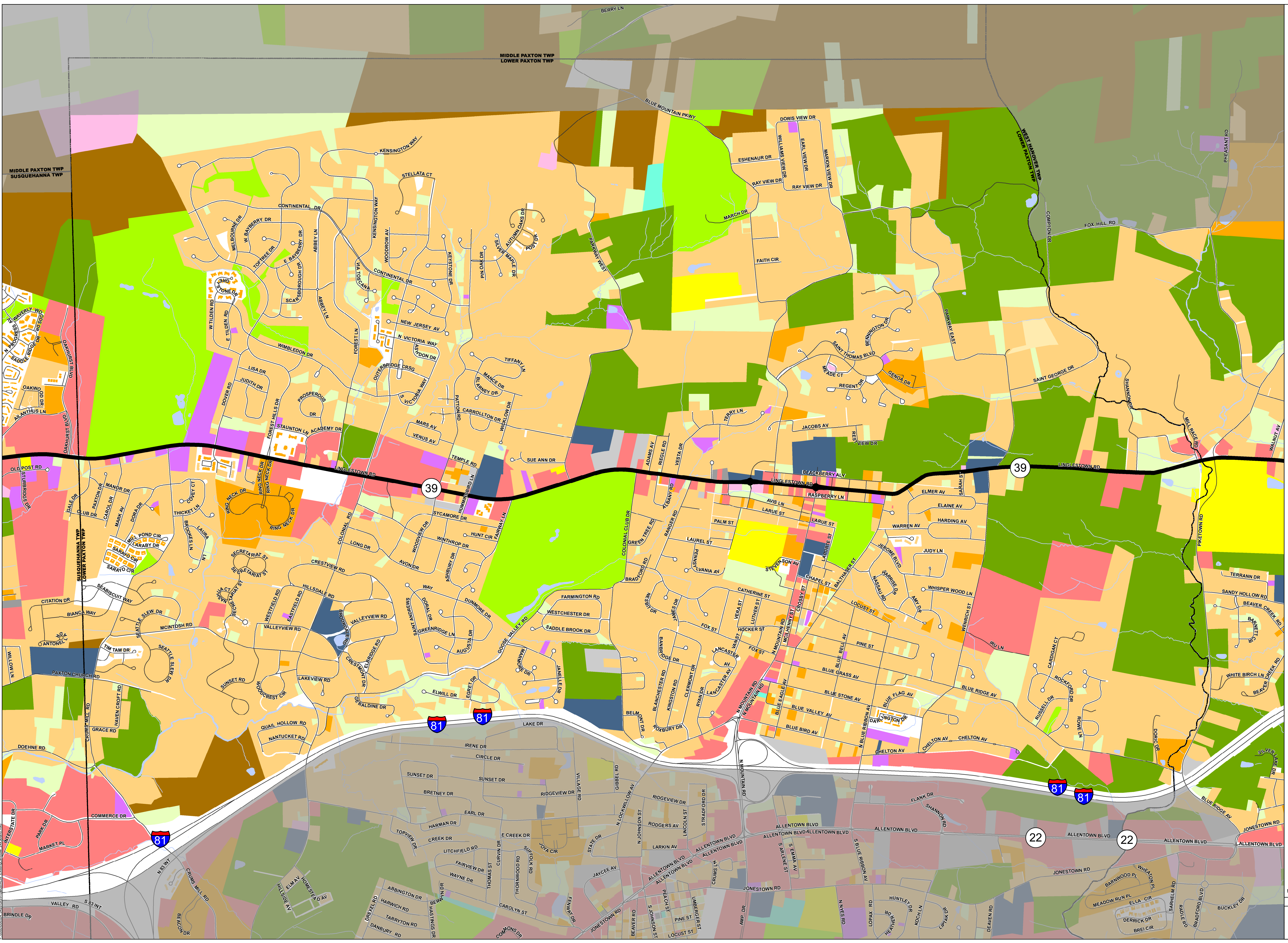
369 East Park Drive
Harrisburg, PA 17111
717.564.1121 (phone)
717.564.1158 (fax)
www.hrg-inc.com

P:\000000024_0426\GIS\Drawings\0303_Existing_Land_Use_24306.mxd

Existing Land Use State Route 39 Corridor Lower Paxton Township Dauphin County, Pennsylvania

-  PA Route 39
-  Street
-  Municipal Boundary
-  Residential - Estimated Low Density
-  Residential - Estimated Medium Density
-  Residential - Estimated High Density
-  Vacant Land
-  Recreational Land
-  Farm Land
-  Natural Resources
-  Commercial / Office
-  Church / Cemetary
-  Medical
-  Educational / Library
-  State / Municipal / Utility
-  Misc Land
-  Industrial
-  Parking
-  Water

NOTE: Land use has been derived from the Dauphin County parcel land use attribute.



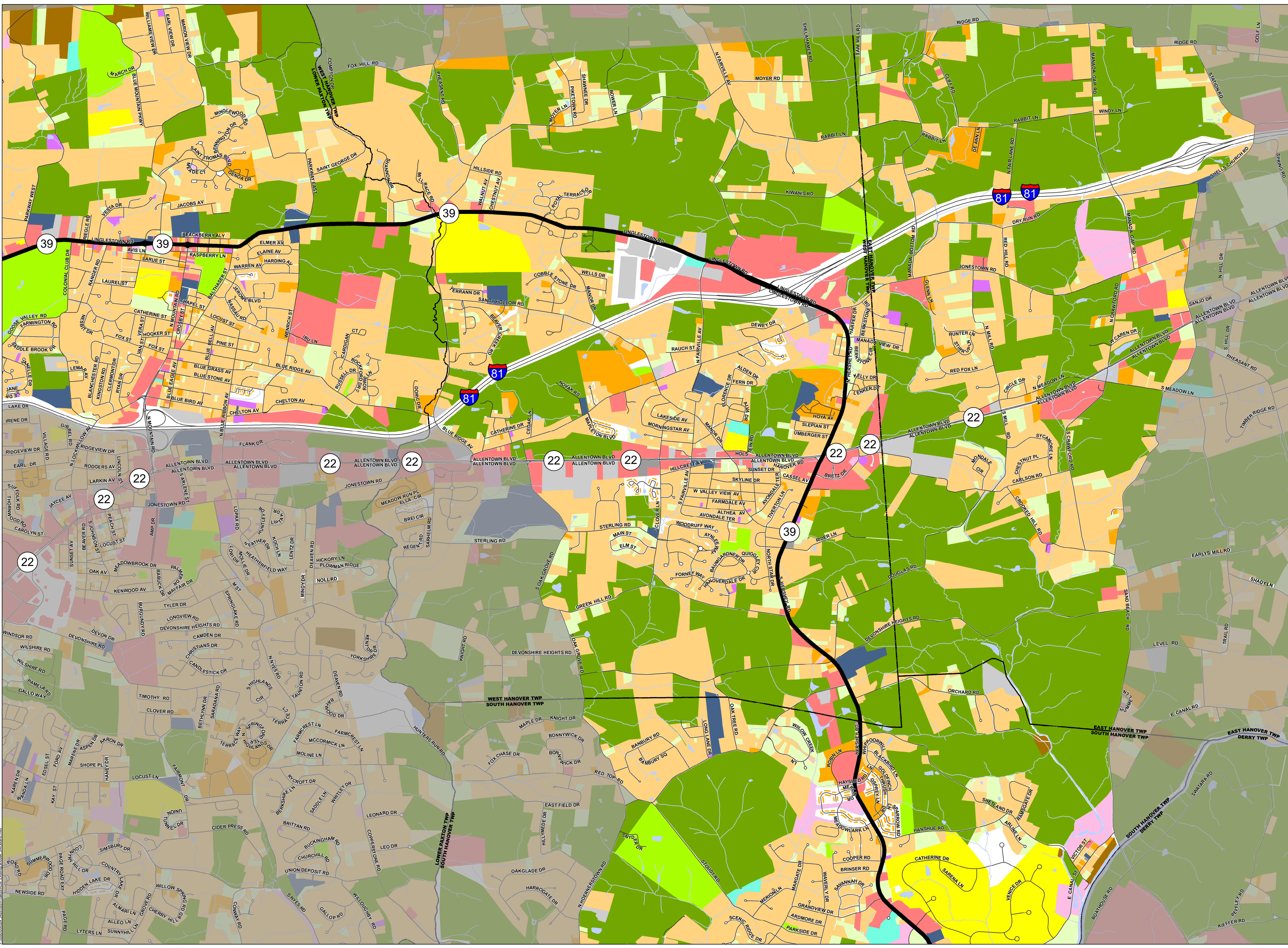
Mapping derived from data provided by Dauphin County and TriCounty.

12/7/2017 PM: EJS GIS: BLS QA: MDW R006524.0426

HRG
Herbert Rowland & Grubb, Inc.
Engineering & Related Services
An Employee-Owned Company

369 East Park Drive
Harrisburg, PA 17111
717.564.1121 (phone)
717.564.1158 (fax)
www.hrg-inc.com

Existing Land Use State Route 39 Corridor West Hanover Township Dauphin County, Pennsylvania



- PA Route 39
- Street
- Municipal Boundary
- Residential - Estimated Low Density
- Residential - Estimated Medium Density
- Residential - Estimated High Density
- Vacant Land
- Recreational Land
- Farm Land
- Natural Resources
- Commercial / Office
- Church / Cemetery
- Medical
- Educational / Library
- State / Municipal / Utility
- Misc Land
- Industrial
- Parking
- Water

NOTE: Land use has been derived from the Dauphin County parcel land use attribute.




Mapping derived from data provided by Dauphin County and TriCounty.
12/7/2017 PM: EJS GIS: BLS QA: MDW R006524.0428

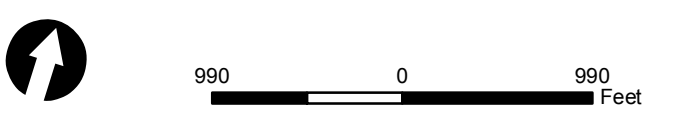
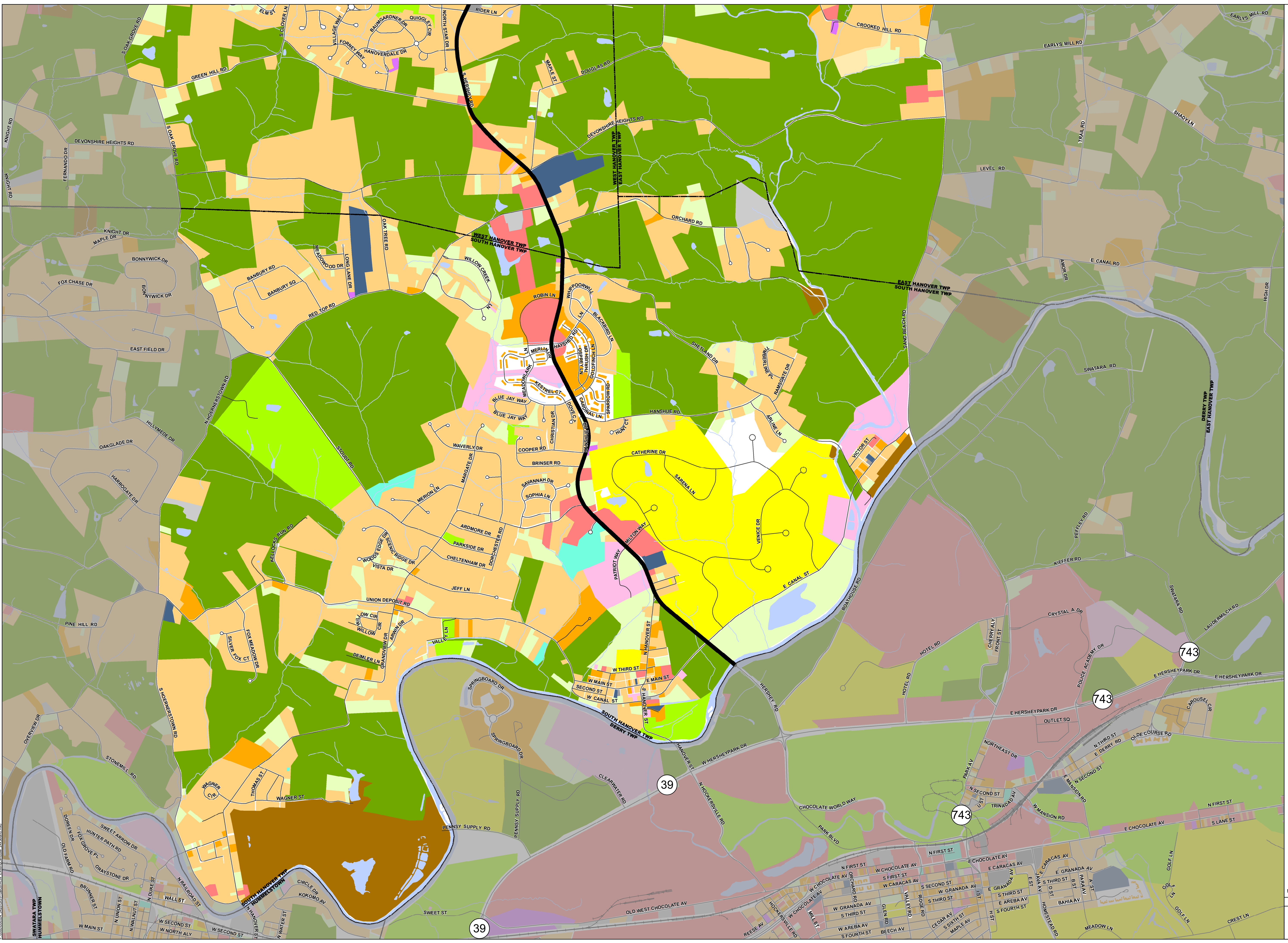
HRG
Herbert Rowland & Grubb, Inc.
Engineering & Related Services
An Employee-Owned Company

369 East Park Drive
Harrisburg, PA 17111
717.564.1121 (phone)
717.564.1158 (fax)
www.hrg-inc.com

**Existing Land Use
State Route 39 Corridor
South Hanover Township
Dauphin County, Pennsylvania**

-  PA Route 39
-  Street
-  Municipal Boundary
-  Railroad
-  Residential - Estimated Low Density
-  Residential - Estimated Medium Density
-  Residential - Estimated High Density
-  Vacant Land
-  Recreational Land
-  Farm Land
-  Natural Resources
-  Commercial / Office
-  Church / Cemetary
-  Medical
-  Educational / Library
-  State / Municipal / Utility
-  Misc Land
-  Industrial
-  Parking
-  Water

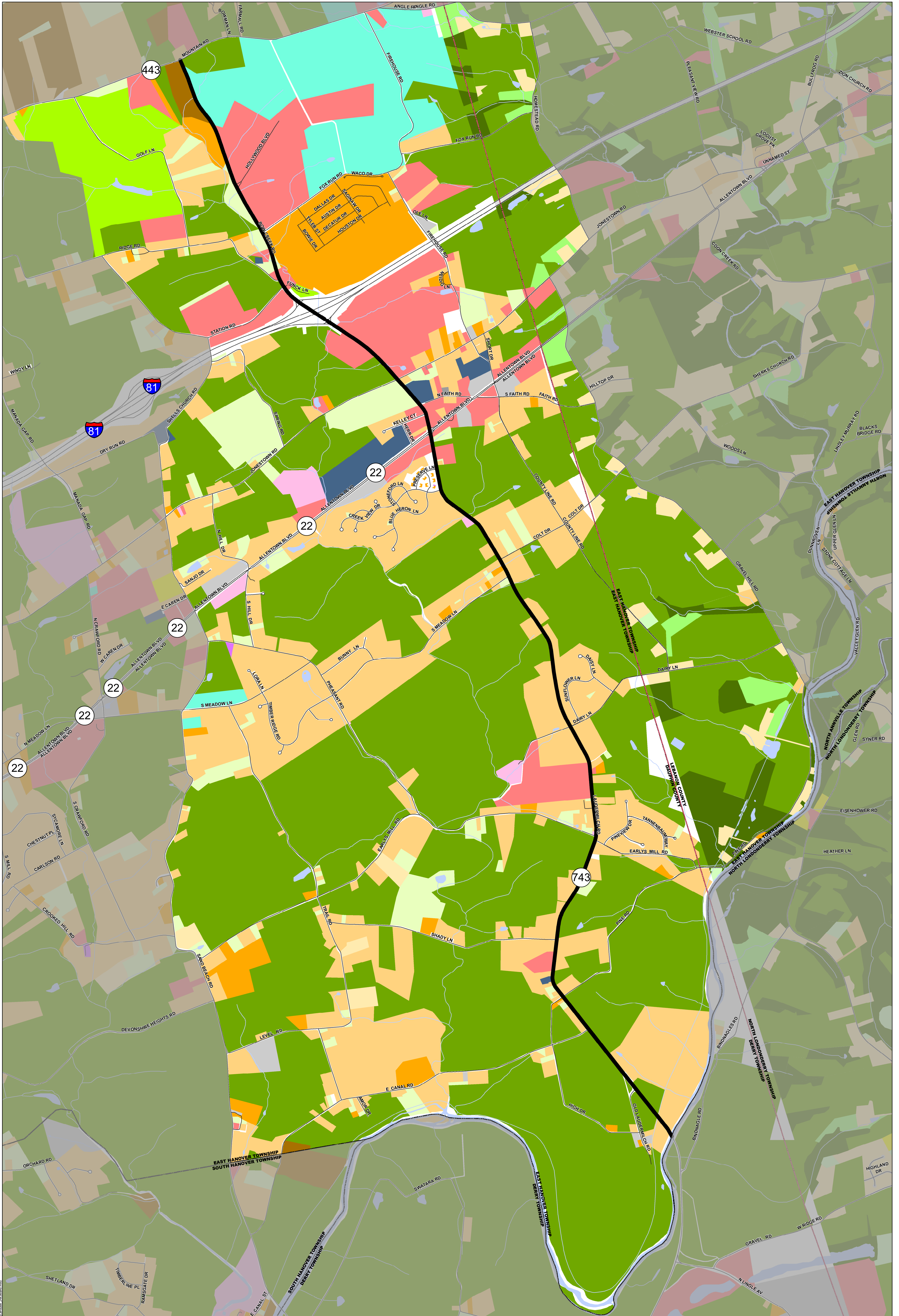
NOTE: Land use has been derived from the Dauphin County parcel land use attribute.



Mapping derived from data provided by Dauphin County and Tricity.

12/7/2017	PM: EJS	GIS: BLS	QA: MDW	R006524.0426
		369 East Park Drive Harrisburg, PA 17111 717.564.1121 (phone) 717.564.1158 (fax) www.hrg-inc.com		

P:\000000024_0426\GIS\Output\0303_Existing_Land_Use_241206.mxd



1,000 0 1,000 Feet
 Mapping derived from data provided by Dauphin County, TriCounty, Lebanon County, PennDOT, and USGS.
 12/8/2017 | PM: EJS | GIS: BLS | QA: MDW | R008524.0426
HRG
 369 East Park Drive
 Harrisburg, PA 17111
 717.564.1124 (phone)
 717.564.1158 (fax)
 www.hrg-inc.com
 An Employee-Owned Company

Dauphin County Existing Land Use		Lebanon County Existing Land Use	
Residential - Estimated Low Density	Recreational Land	Church / Cemetery	Industrial
Residential - Estimated Medium Density	Farm Land	Medical	Parking
Residential - Estimated High Density	Natural Resources	Educational / Library	Forest
Vacant Land		State / Municipal / Utility	
Vacant Land		Misc Land	
Recreational Land		Industrial	
Farm Land		Parking	
Natural Resources		Forest	
		Low Density Residential	Water
		High Density Residential	Water
		Residential Seasonal	Municipal Boundary
		Utility	County Boundary
		Transportation	

Existing Land Use
State Route 743 Corridor
East Hanover Township
Dauphin County, Pennsylvania
 NOTE: Land use has been derived from the Dauphin County and Lebanon County parcel land use attributes.