

**Lenker  
Pump Station**

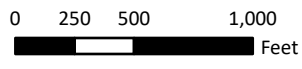
6/27/2023 PM: TBL GIS: ALV QA: TBL R001650.0428



**369 East Park Drive**  
Harrisburg, PA 17111  
717.564.1121 [phone]  
[www.hrg-inc.com](http://www.hrg-inc.com)



Page 1 of 3



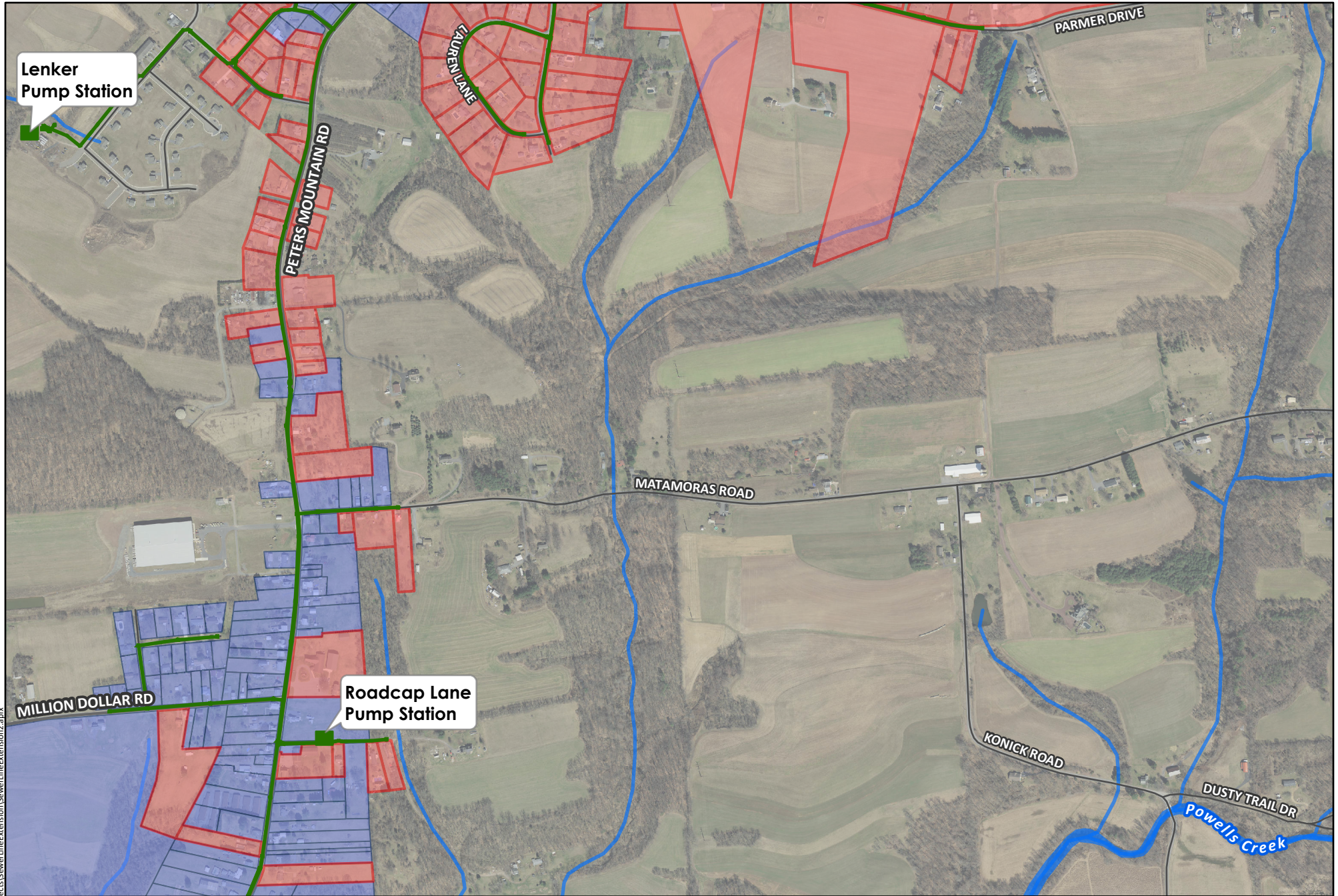
Mapping derived from data provided by PennDOT,  
Dauphin County, ESRI, and USGS.

- Proposed Grinder Pump Connections
- Proposed Gravity Connections
- State Roads
- Local Roads
- Waterbody
- Proposed Sewer Line & Pump Stations

## Sanitary Sewer Extension Project

Halifax Township  
Dauphin County, PA

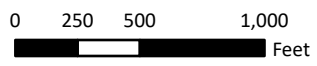
P:\001650\001650\_0428\GIS\Projects\SewerLineExtension\SewerLineExtension2.aprx



6/27/2023 PM: TBL GIS: ALV QA: TBL R001650.0428



369 East Park Drive  
Harrisburg, PA 17111  
717.564.1121 [phone]  
www.hrg-inc.com



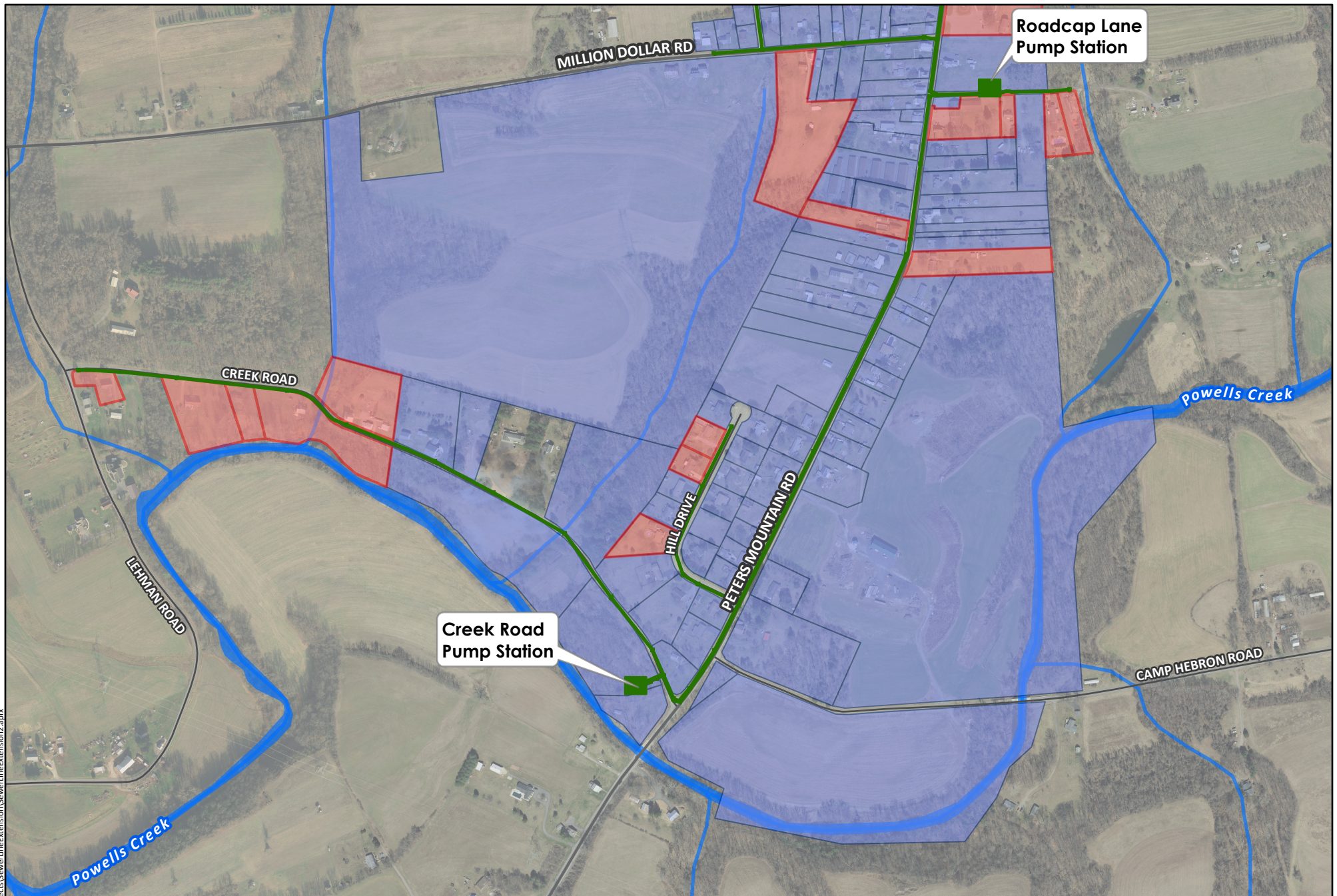
Mapping derived from data provided by PennDOT, Dauphin County, ESRI, and USGS.

- Proposed Grinder Pump Connections
- Proposed Gravity Connections
- State Roads
- Local Roads
- Waterbody
- Proposed Sewer Line & Pump Stations

## Sanitary Sewer Extension Project

Halifax Township  
Dauphin County, PA

P:\001650\001650\_0428\GIS\Projects\SewerLineExtension\SewerLineExtension2.aprx



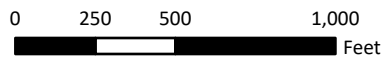
6/27/2023 PM: TBL GIS: ALV QA: TBL R001650.0428



369 East Park Drive  
Harrisburg, PA 17111  
717.564.1121 [phone]  
www.hrg-inc.com



Page 3 of 3



Mapping derived from data provided by PennDOT, Dauphin County, ESRI, and USGS.

- Proposed Grinder Pump Connections
- Proposed Gravity Connections
- State Roads
- Local Roads
- Waterbody
- Proposed Sewer Line & Pump Stations

## Sanitary Sewer Extension Project

Halifax Township  
Dauphin County, PA