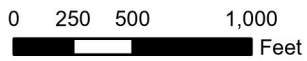


P:\0016001650\_0426\GIS\Projects\SewerLineExtension\SewerLineExtension.aprx

11/1/2023 PM: TBL GIS: ALV QA: TBL R001650.0428



369 East Park Drive  
Harrisburg, PA 17111  
717.564.1121 [phone]  
www.hrg-inc.com

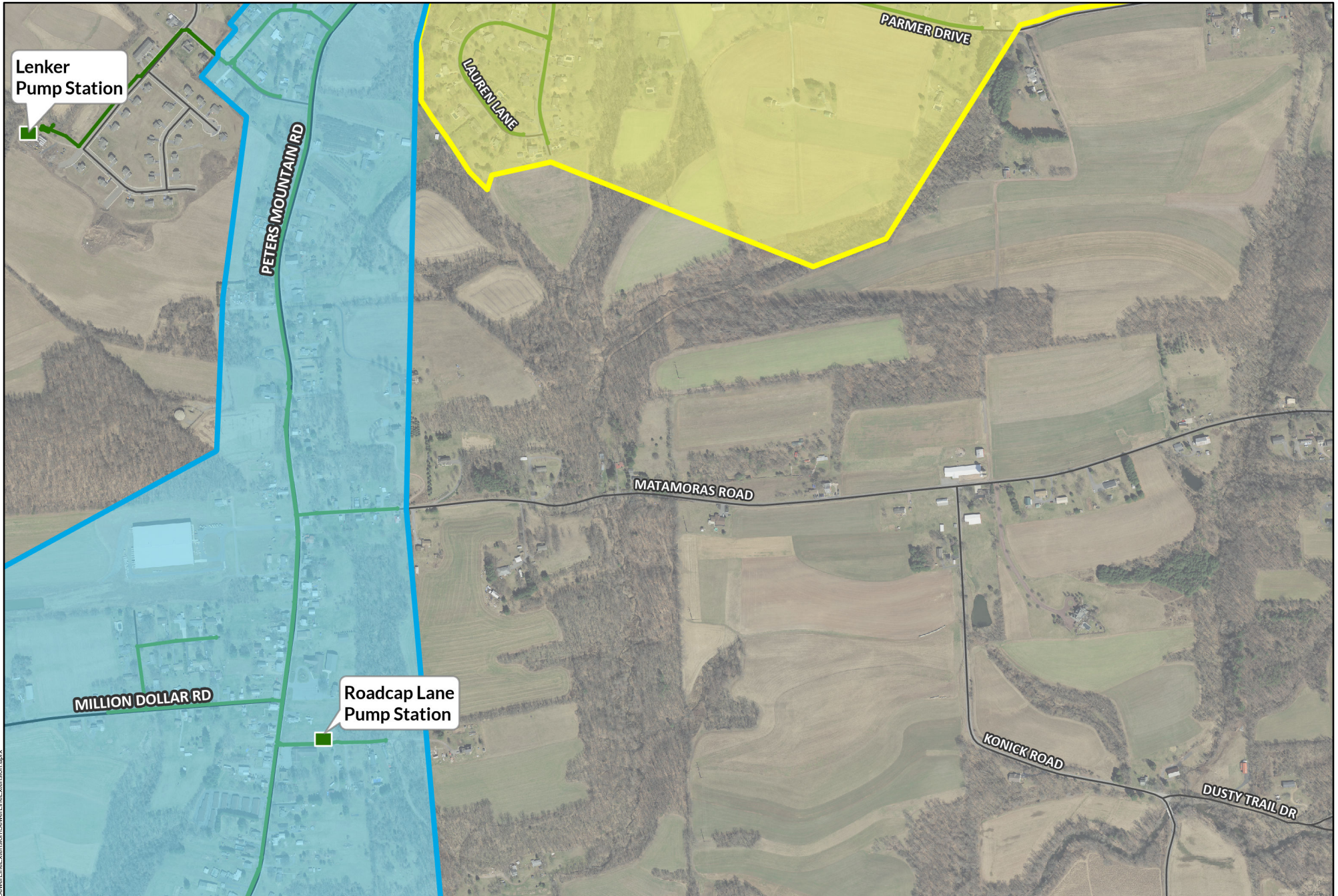


Mapping derived from data provided by PennDOT, Dauphin County, ESRI, and USGS.

- Sheetz Store Extension Zone (\$4,948.02 Tapping Fee/EDU)
- Total Area Wide Tapping Fee (\$4,504.44 Tapping Fee/EDU)
- State Roads
- Local Roads
- Proposed Sewer Line & Pump Stations

## Tapping Fee Zones

Halifax Township  
Dauphin County, PA

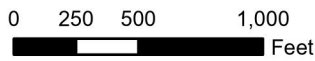


P:\0016001650\_0426\GIS\Projects\SewerLineExtension\SewerLineExtension.aprx

11/1/2023 PM: TBL GIS: ALV QA: TBL R001650.0428



369 East Park Drive  
Harrisburg, PA 17111  
717.564.1121 [phone]  
www.hrg-inc.com

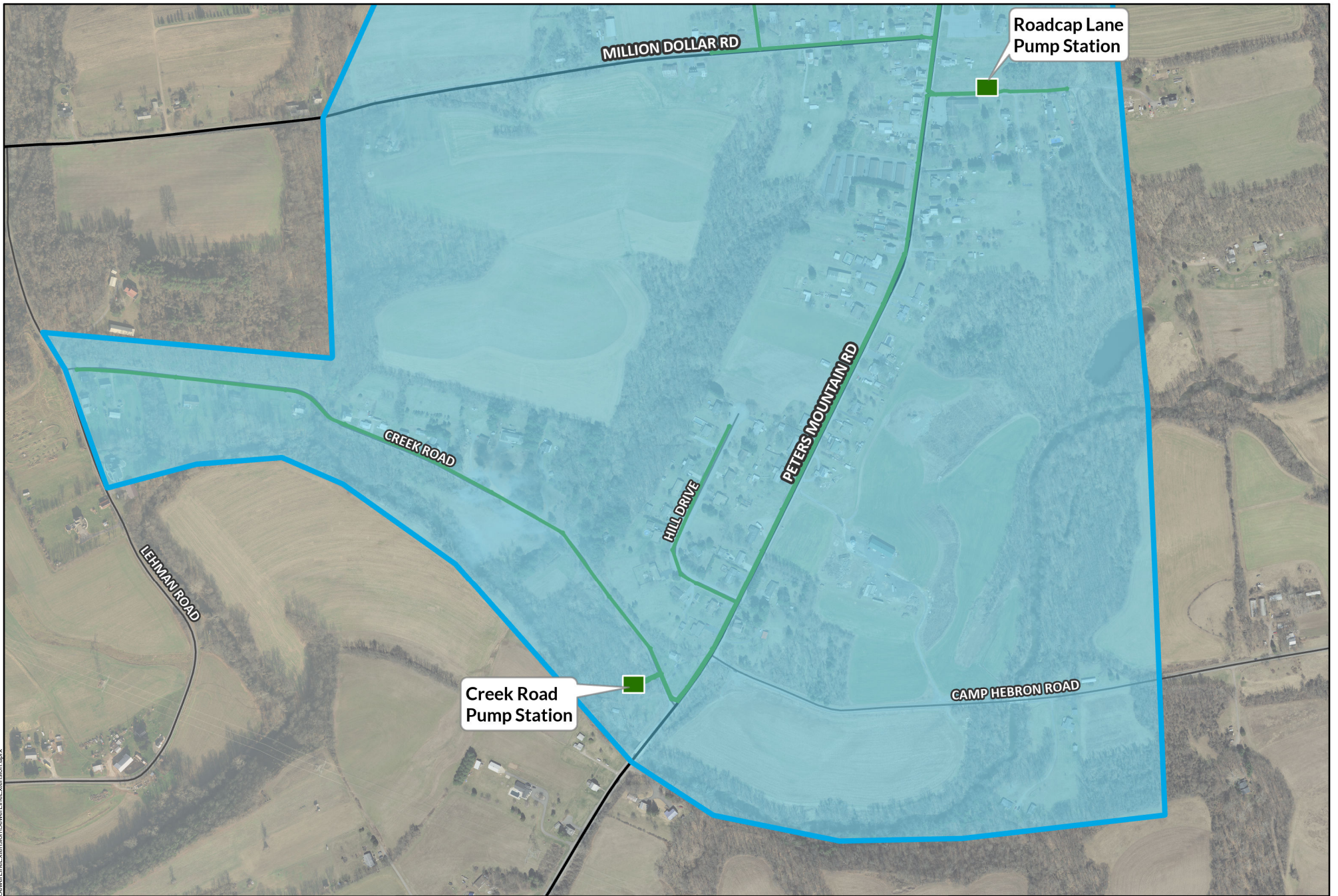


Mapping derived from data provided by PennDOT, Dauphin County, ESRI, and USGS.

- Sheetz Store Extension Zone (\$4,948.02 Tapping Fee/EDU)
- Total Area Wide Tapping Fee (\$4,504.44 Tapping Fee/EDU)
- State Roads
- Local Roads
- Proposed Sewer Line & Pump Stations

### Tapping Fee Zones

Halifax Township  
Dauphin County, PA

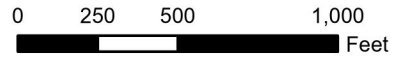


P:\001650\_0428\GIS\Projects\SewerLineExtension\SewerLineExtension.aprx

11/1/2023 PM: TBL GIS: ALV QA: TBL R001650.0428



369 East Park Drive  
 Harrisburg, PA 17111  
 717.564.1121 [phone]  
 www.hrg-inc.com



Mapping derived from data provided by PennDOT, Dauphin County, ESRI, and USGS.

- Sheetz Store Extension Zone (\$4,948.02 Tapping Fee/EDU)
- Total Area Wide Tapping Fee (\$4,504.44 Tapping Fee/EDU)
- State Roads
- Local Roads
- Proposed Sewer Line & Pump Stations

### Tapping Fee Zones

Halifax Township  
 Dauphin County, PA